

ZMD-DT-SFN6

Monitor Client for ZMD-DT-SFN6 is in Chinese

The first time you open the ZMD-DT-SFN6 PC software Monitor Client it will be in Chinese or symbols. To change the language to English you have two options.

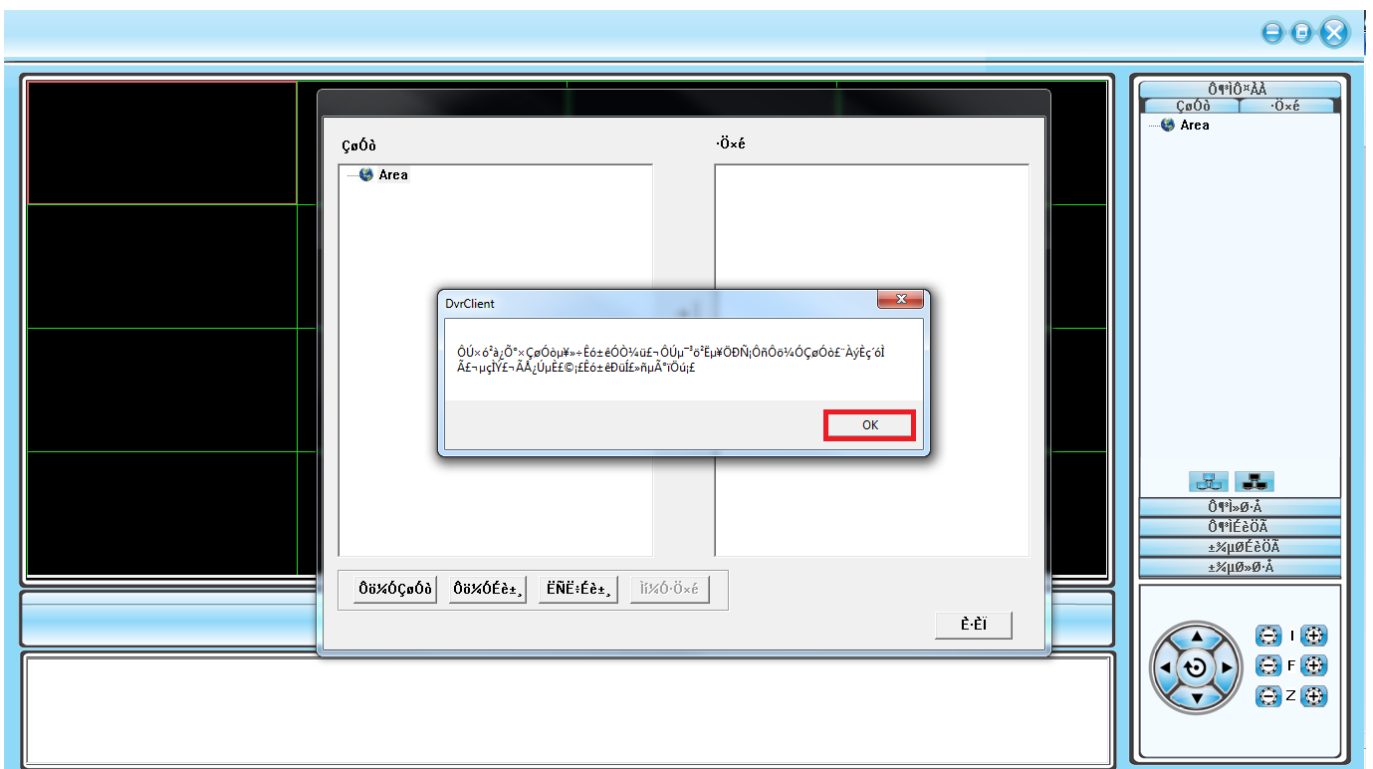
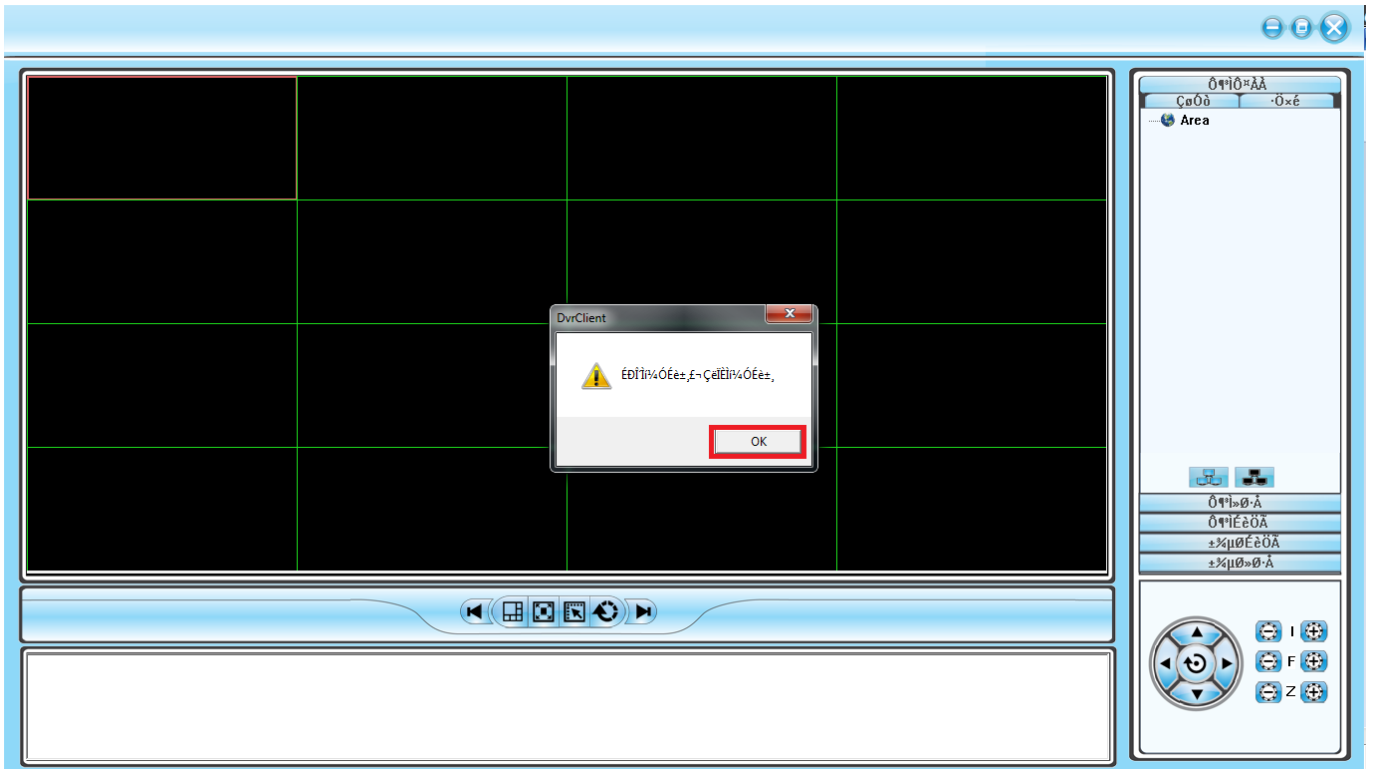
First method: Switching out the software's language folders

1. Go to the file folder in which the Monitor Client installed
(Generally should be C://Program Files (x86)/Monitor Client)
2. Go into the "LANG" folder and delete the folder labeled "CHS"
3. Rename the folder "ENG" to "CHS"
4. Restart Monitor Client, and it should now be in English

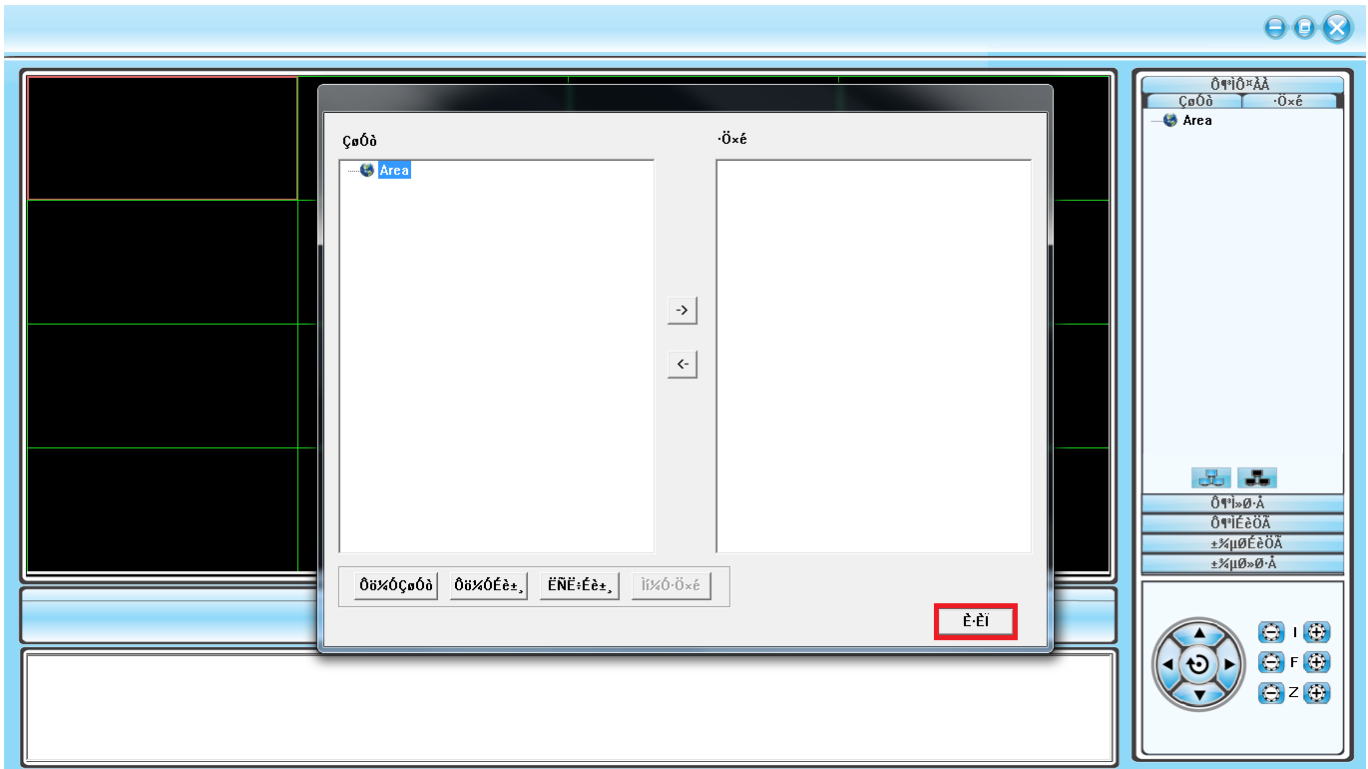
Second method: Blind walkthrough menus

You can follow the screen shots below to navigate the menus and change the language from Chinese to English. Click on the icon outlined in red on each of the following screens.

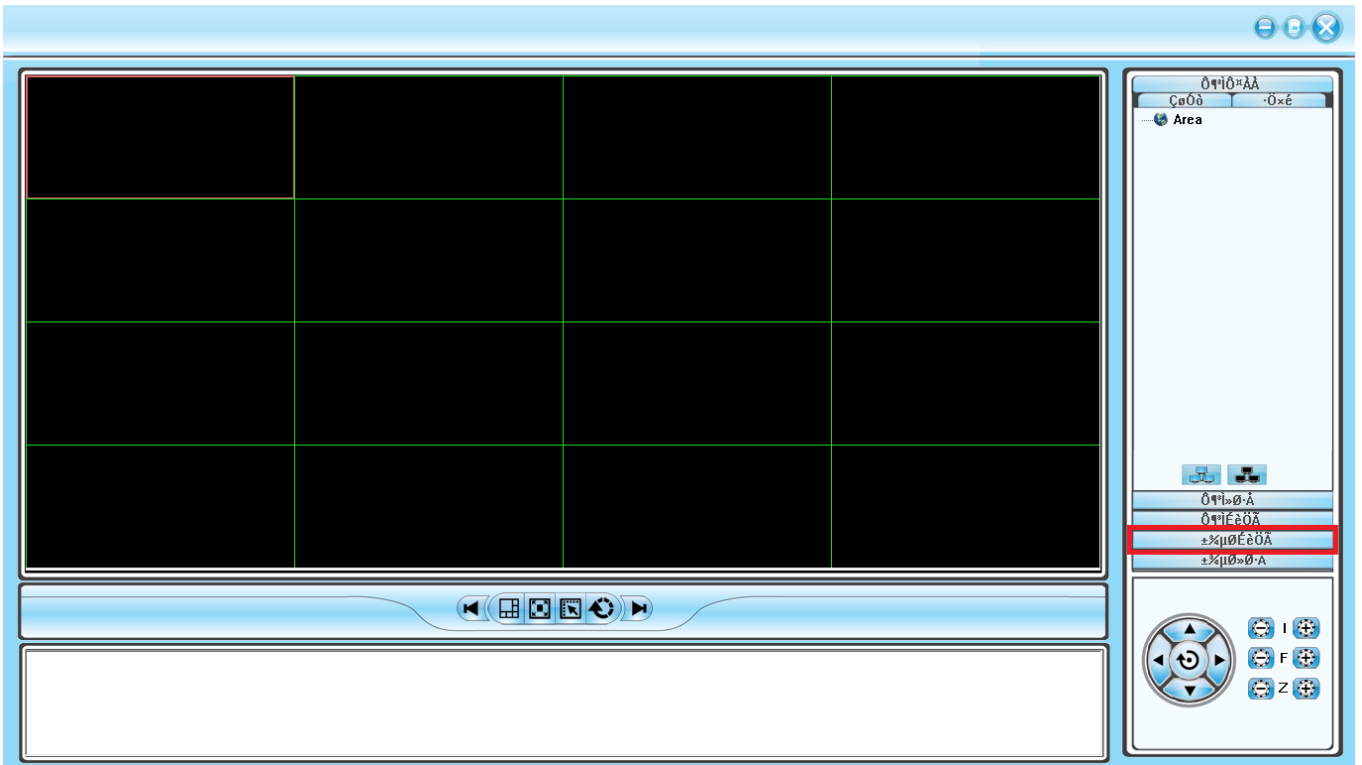
ZMD-DT-SFN6



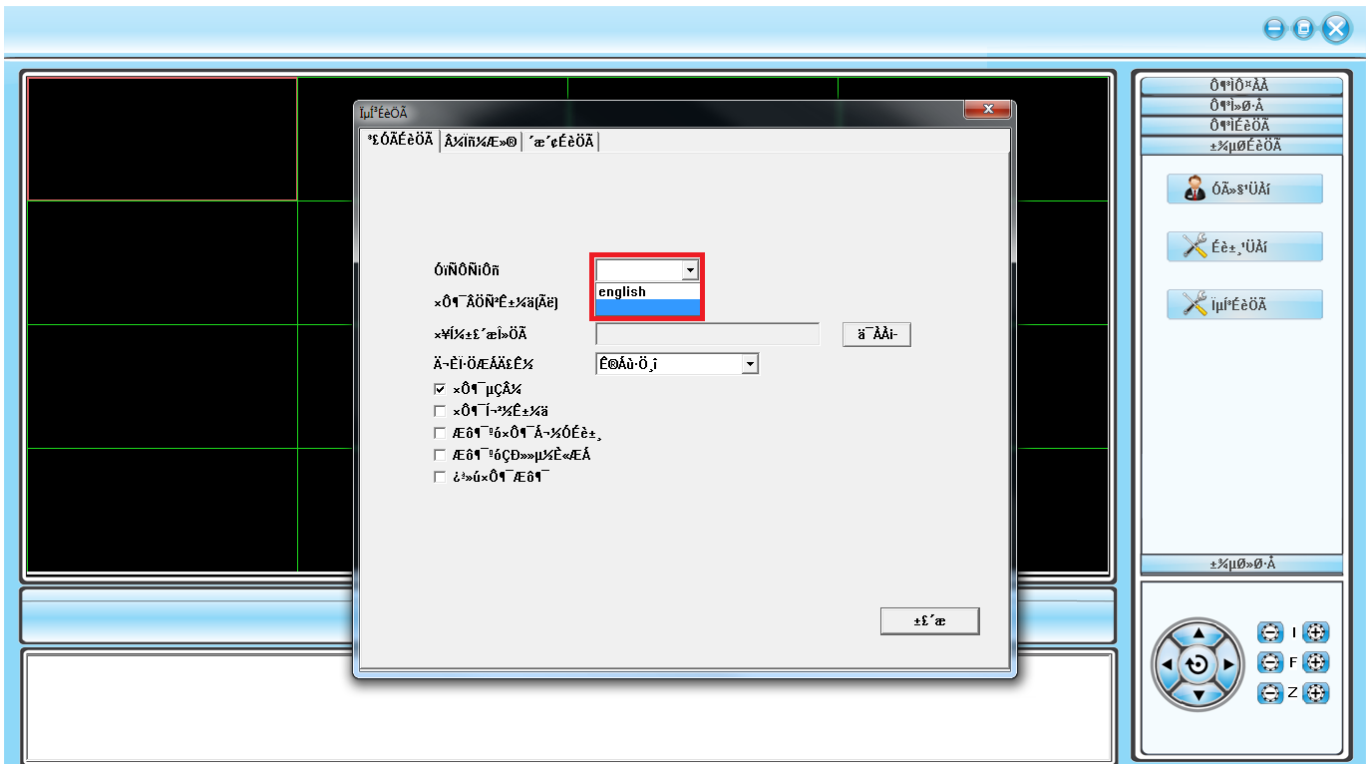
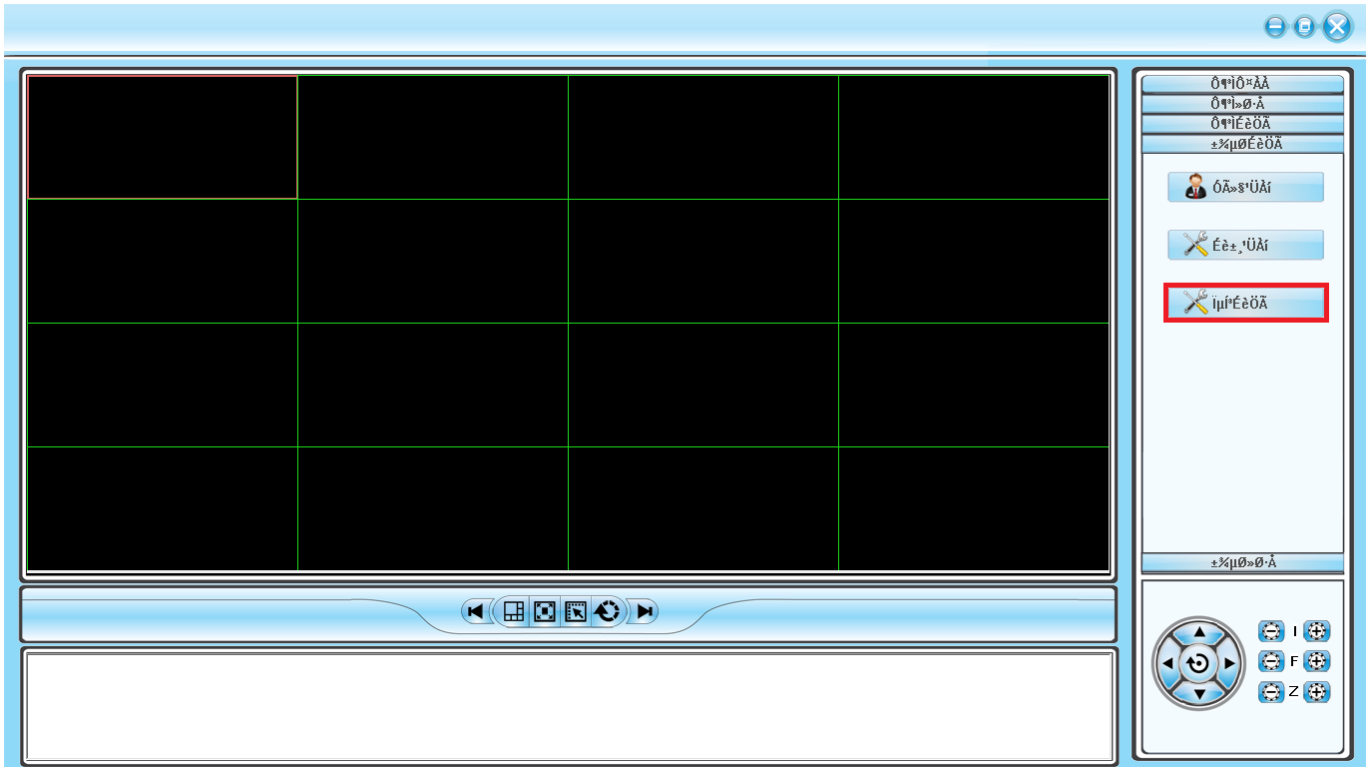
ZMD-DT-SFN6



ZMD-DT-SFN6



ZMD-DT-SFN6



Unique solution ID: #1309

Author: Ed Lamont

ZMD-DT-SFN6

Last update: 2015-03-27 15:20