

# ZH-NA04-W (Mini NVR w/ Access Point)

## Enabling Motion Detection on the NVR (New Interface)

The following are all motion detection enabling steps once you've updated all new firmware onto the IP Cameras and NVR. Any camera with FW versions of 1.0.1X-D should be compatible. If your firmware contains 1.2.XX or 1.1.XX, please contact Zmodo directly for assistance:

1. Log into the IP Camera using Internet Explorer (Step 1 will need to be performed on all IP Cameras)

a. Go to **Remote Configuration > Alarm Setting**

Device Parameters

Local Configuration

Remote Configuration

Video Settings

Network Param

Alarm Settings

System Info

Advanced Settings

Motion Alarm

week: All

	Start Time	End Time	
Time 1	00:00:00	23:59:00	<input checked="" type="checkbox"/>
Time 2	00:00:00	00:00:00	<input type="checkbox"/>
Time 3	00:00:00	00:00:00	<input type="checkbox"/>
Time 4	00:00:00	00:00:00	<input type="checkbox"/>

12/29/2012 04:59:27

Output Port

☐ Port 1 ☐ Port 2

☐ Port 3 ☐ Port 4

Alarm Method

☐ Audio ☐ Capture

☐ FTP ☐ Email

☐ Record ☒ Upload

Sensitivity: Medium

Output Delay: 8

☒ Motion Detect

Submit

b. From the Alarm Setting page, check the check-box labeled **Motion Detect**

c. Adjust the start and end time to read "00:00:00 - 23:59:00"

d. Left-click any squares in the grid that you do want to detect motion. Any non-orange squares in the grid will ignore motion. In this new firmware, you can click-and-drag over the squares to quickly select squares.

## ZH-NA04-W (Mini NVR w/ Access Point)

e. In the "Alarm Method" box, check **Upload**.

f. Click **Submit** to save these changes.

2. From the NVR, go to Main Menu > Setting > Motion Alarm



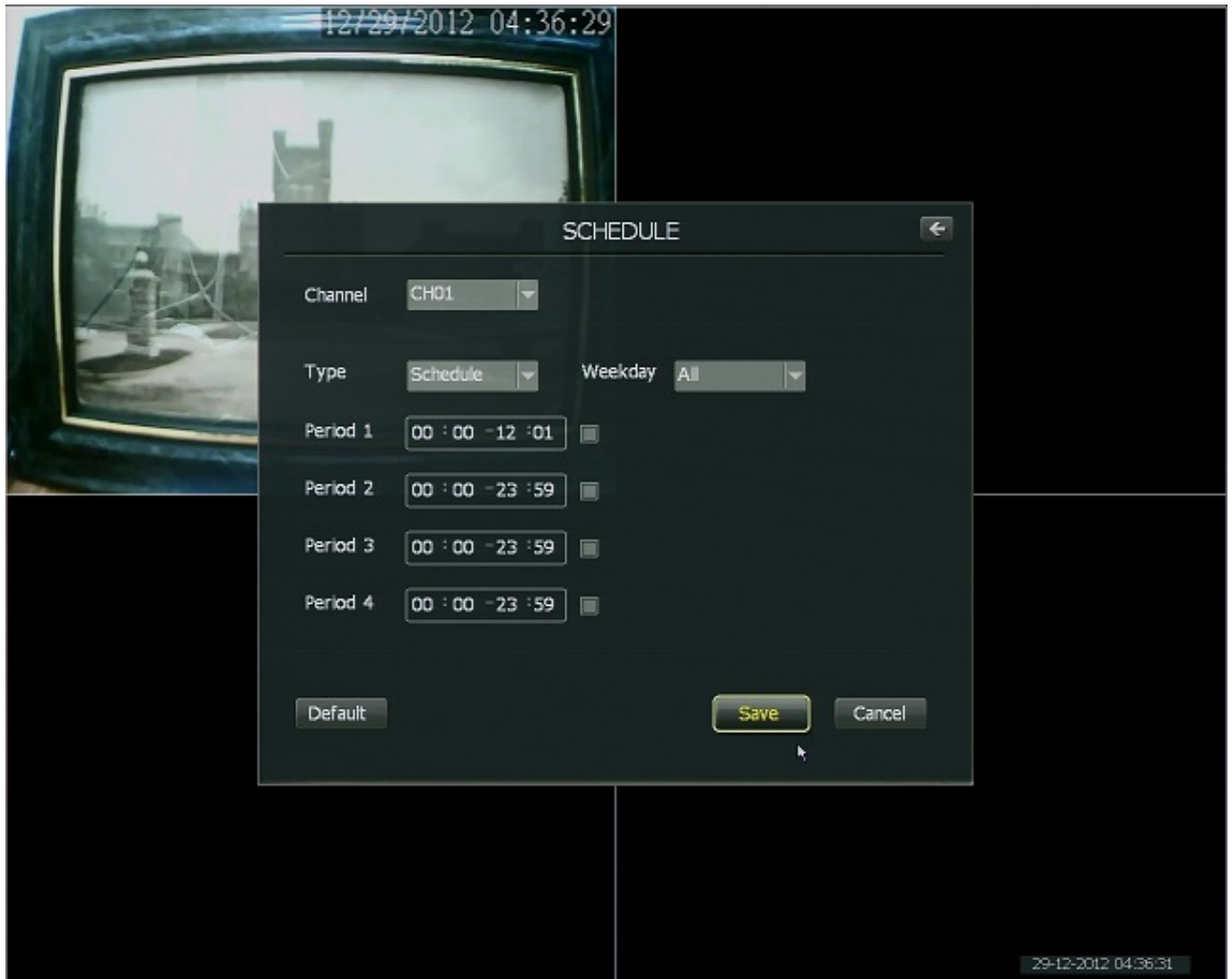
a. Check the check-box to enable **Record** for all channels in this menu.

b. Set the alarm delay to a number between 1 - 9 seconds.

c. Click "Save" to save these changes.

3. From the NVR, go to **Main Menu > Setting > Schedule**

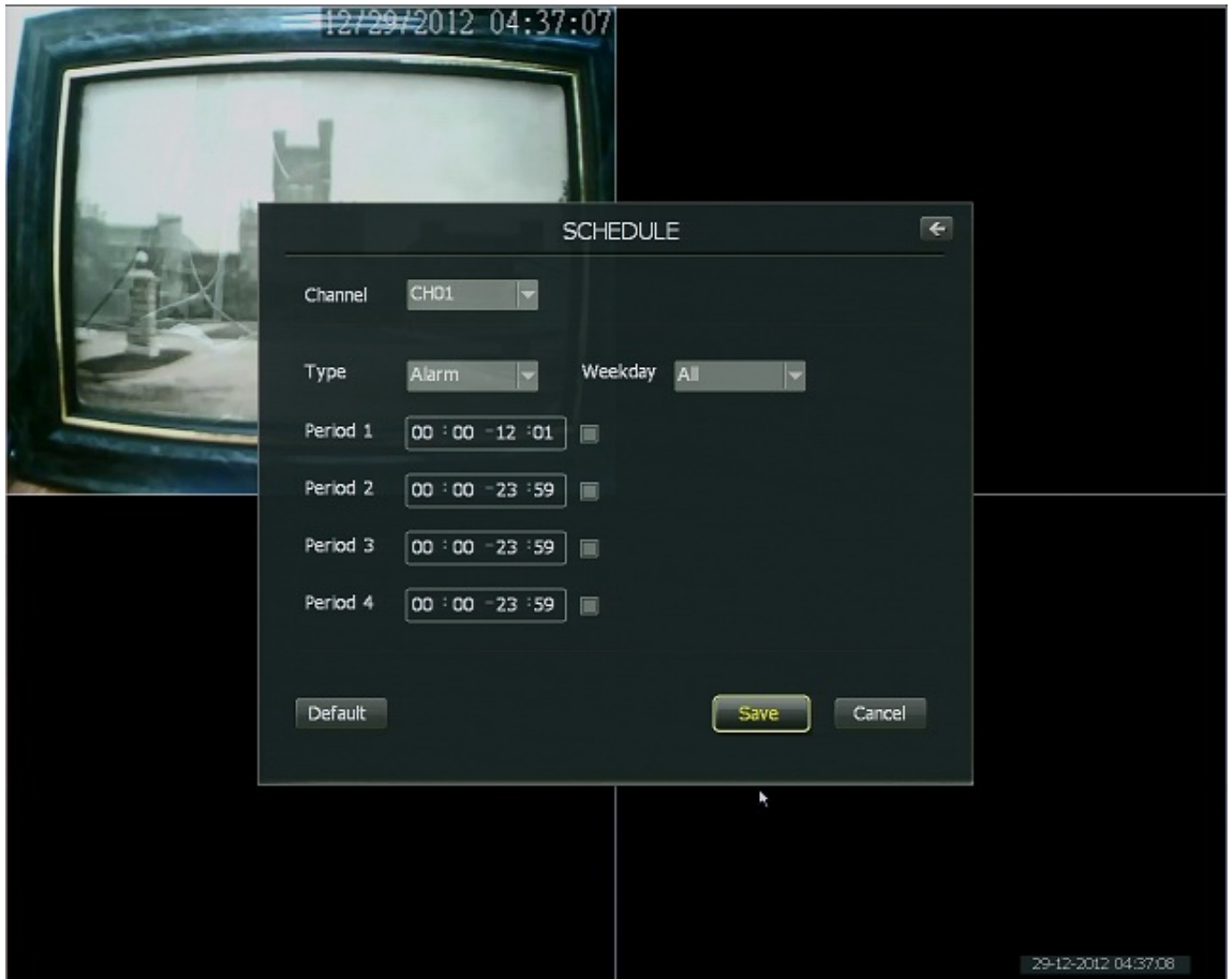
## ZH-NA04-W (Mini NVR w/ Access Point)



From the **Schedule** page, change the following settings:

- Change Channel: CH01 to ALL
- Change Weekday: Sun to ALL
- From the Schedule Tab (accessed by selecting "Schedule" in the drop-down box) disable Period1. This will disable scheduled recording.
- Click Save.

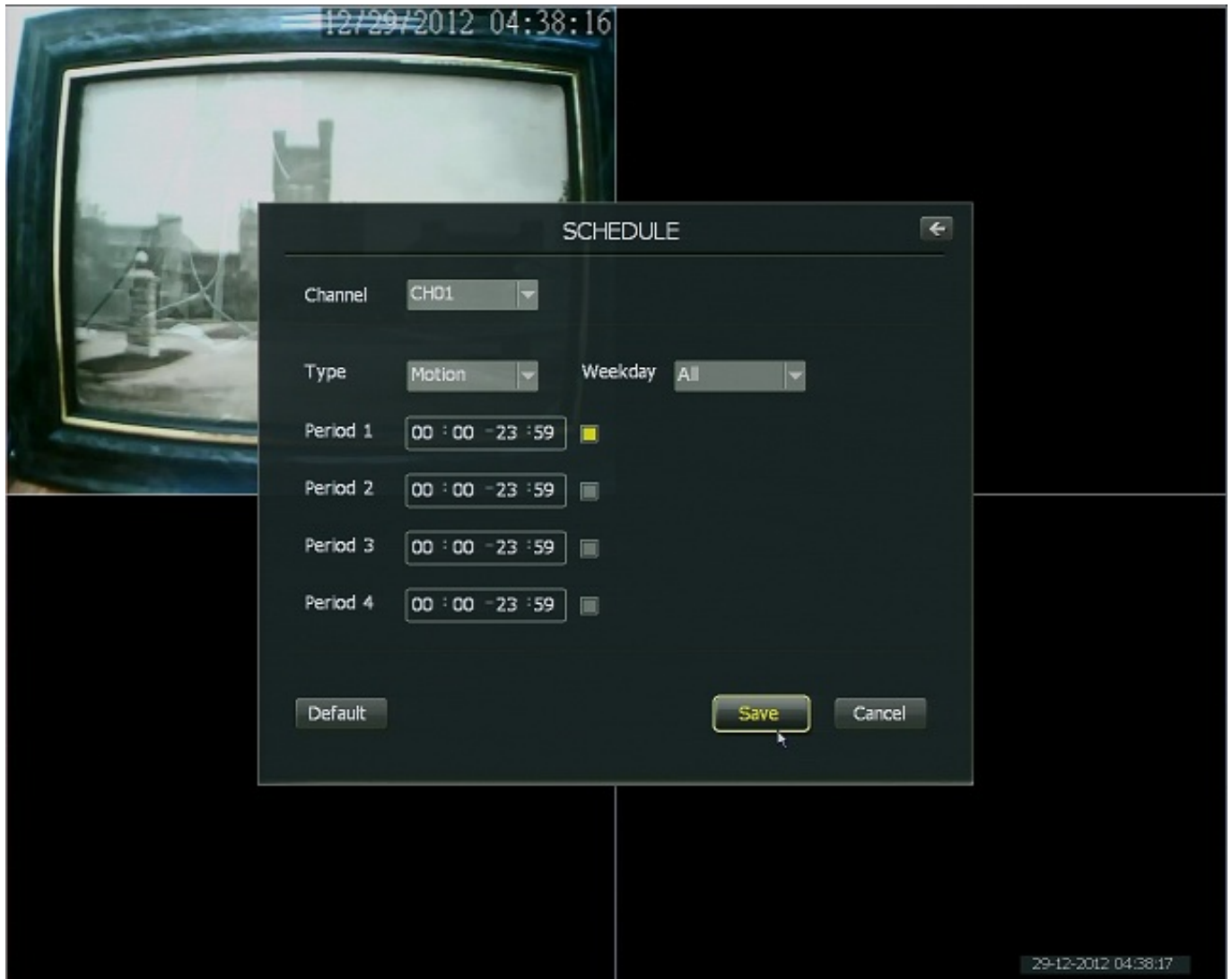
## ZH-NA04-W (Mini NVR w/ Access Point)



e. From the Alarm Tab (accessed by selecting "Alarm" in the drop-down box) make sure Period1 is disabled. This will ensure that Alarm-based recording is disabled.

f. Click Save.

## ZH-NA04-W (Mini NVR w/ Access Point)



g. From the Motion Tab (accessed by selecting "Motion" in the drop-down box) set the time range to 00:00 – 23:59 in the Period1 field. Enable Period1 by selecting its check-box. This will enable motion recording.

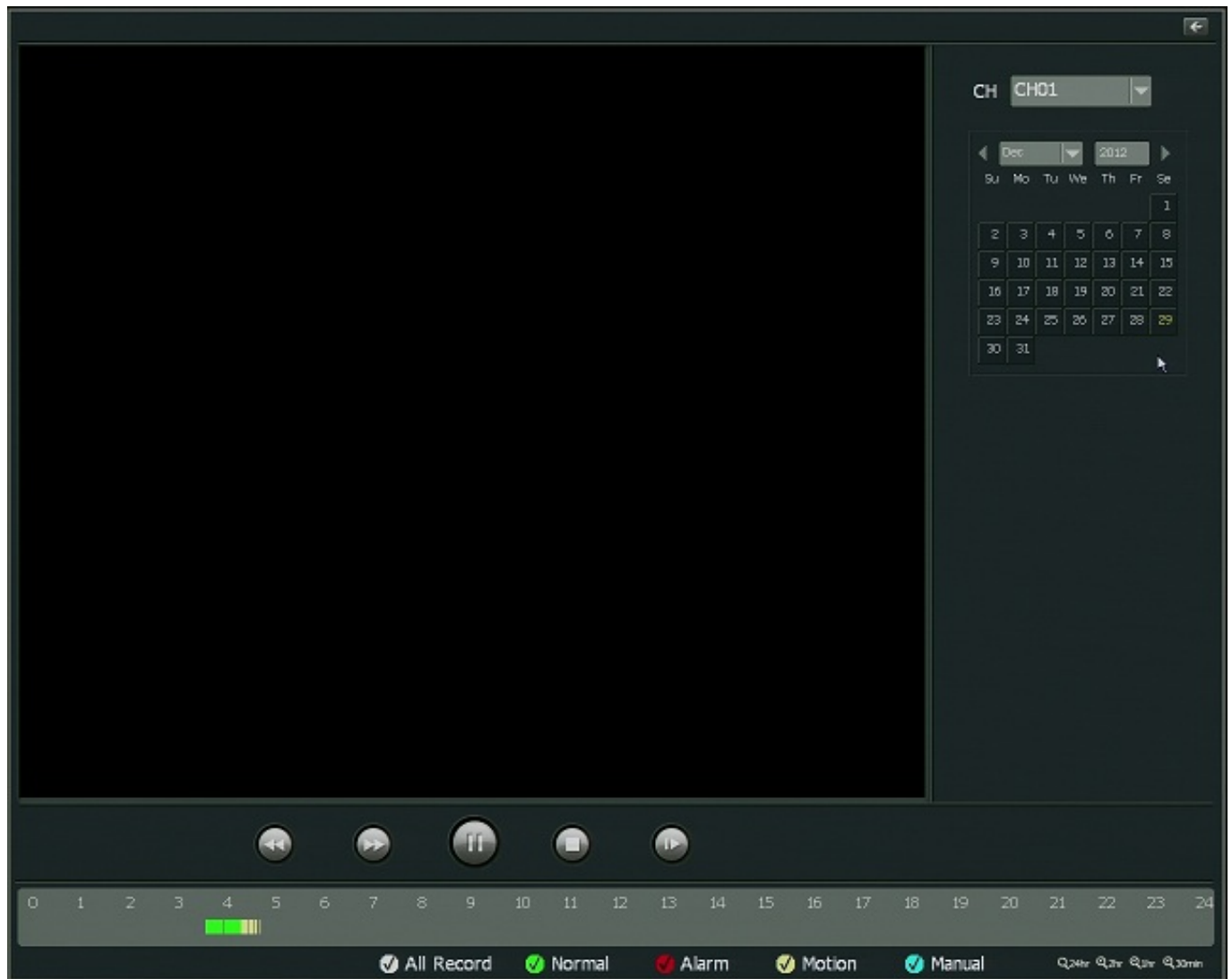
h. Click Save.

## ZH-NA04-W (Mini NVR w/ Access Point)



4. After saving those changes, exit out to the camera grid. When one of the cameras detects motion, the NVR will display a red M on the screen as it records for the duration of time that motion takes place.

# ZH-NA04-W (Mini NVR w/ Access Point)



**\*\*When you go into the playback menu, you will see that any video that was recorded based on motion detection will be in yellow.**

Unique solution ID: #1009

Author: Patricia Pyle

Last update: 2015-03-23 10:48