

ZMD-DX-SBL8

How To Connect a Device Online Using Peer-to-Peer (P2P) Connection on a Mobile Phone

Zmodo devices that have a QR code printed on the label support online viewing using our P2P server. A QR code looks like this:



All Zmodo products that have a QR code can be setup on the internet using the Peer-to-Peer (P2P) method. You can setup your device online using the P2P method using an Android or iPhone smartphone or tablet.

Update! Some items that are compatible with the ZSight app no longer have a QR

ZMD-DX-SBL8

Code. If your product's quick guide says that your product uses Smartlink to connect online, then this guide applies to your product!

ZMD-DX-SBL8

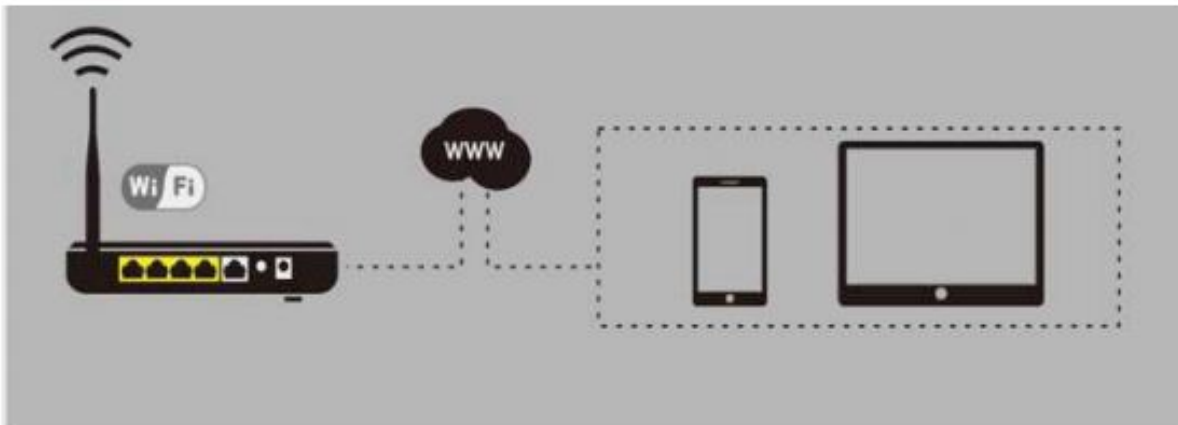
Zsight Remote-viewing Setup

1. Locate the DVR information on the outer casing of your system.



2. Connect your mobile device to the same local network as your DVR.

Please make sure your mobile device is connected to the internet through the same wireless router as your DVR.

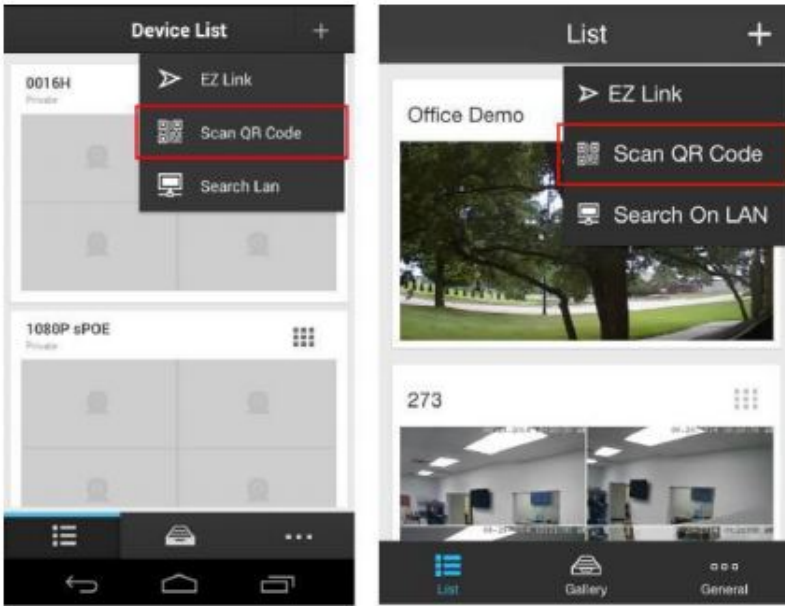


3. Open the Zsight app on your mobile device and create a Zsight account.

If this is your first time using Zsight, you will need to create a new account. Do so by selecting the [Sign Up] option. If you already have an account, press [Log In] and enter your login information.

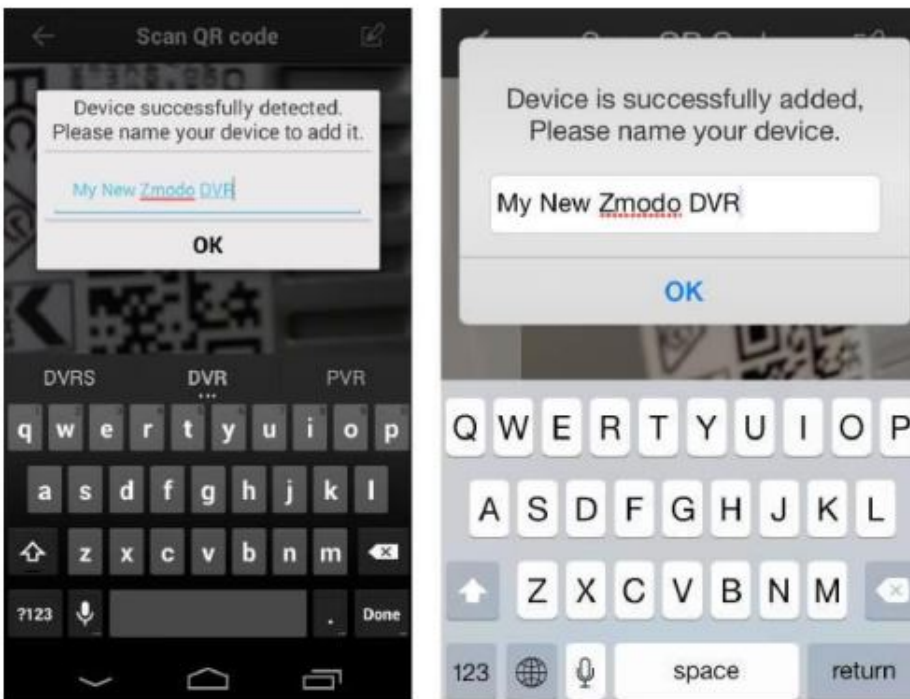
ZMD-DX-SBL8

4. Add a new device to your account. Once you have logged in, you will enter a 'Device List' page. Tap the [+] on the upper right hand corner to open the 'Add Device' menu.



5. Add your DVR by scanning the QR code found in step 1.

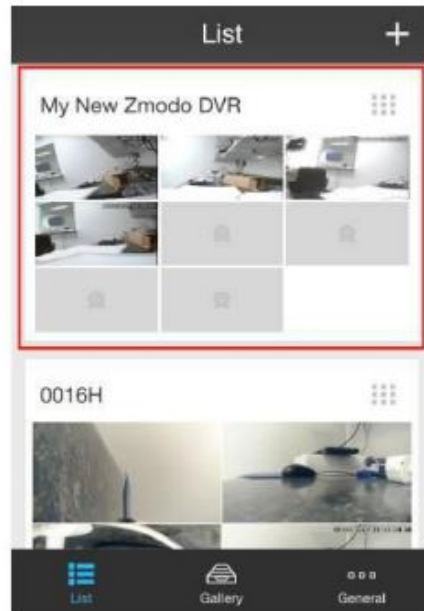
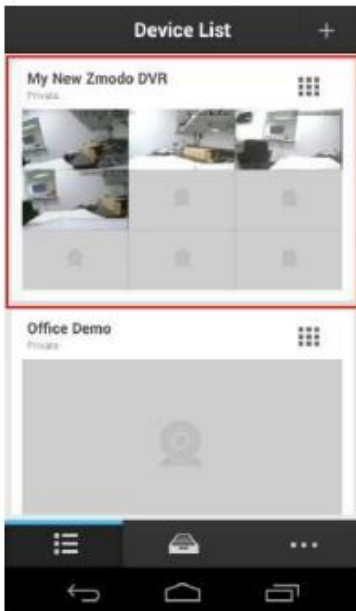
Select the [Scan QR Code] option as shown in the image, and a QR code scanner will open. Locate the QR code sticker found in step 1, point your camera at the QR code and hold it steadily until it successfully scans.



6. Name your device.

When the device has been successfully added, you will be automatically prompted to name your device. Choose any unique name for your device to distinguish it in your device list.

ZMD-DX-SBL8



7. Select your system from the device list to view the live video stream. Go back to the 'Device List' section and select your device from the list. Make sure that a live video stream from your DVR appears.

8. Disconnect from your wireless network and access the DVR using 3G/4G.

Connect your mobile device to a different internet connection from your DVR (3G/4G or any other wireless connection) and repeat step 6. Our product servers will automatically authenticate your DVR for remote-viewing capabilities.



9. Your device is now activated for remote surveillance! You will now be able to view your DVR on any Android or iOS device with internet connection! In order to do so, simply download the Zsight app on the desired device and log in to your account from step 1. You can also share your device with anyone with a Zsight user account by accessing the settings menu for your device in the Zsight app.

Unique solution ID: #1328

Author: Amanda Mayer

Page 5 / 6

(c) 2026 Jeremy Schultz <itmanager@eptco.com> | 2026-06-25 02:28

URL: <https://kb.zmodo.com/index.php?action=artikel&cat=160&id=328&artlang=en>

ZMD-DX-SBL8

Last update: 2015-09-24 10:36