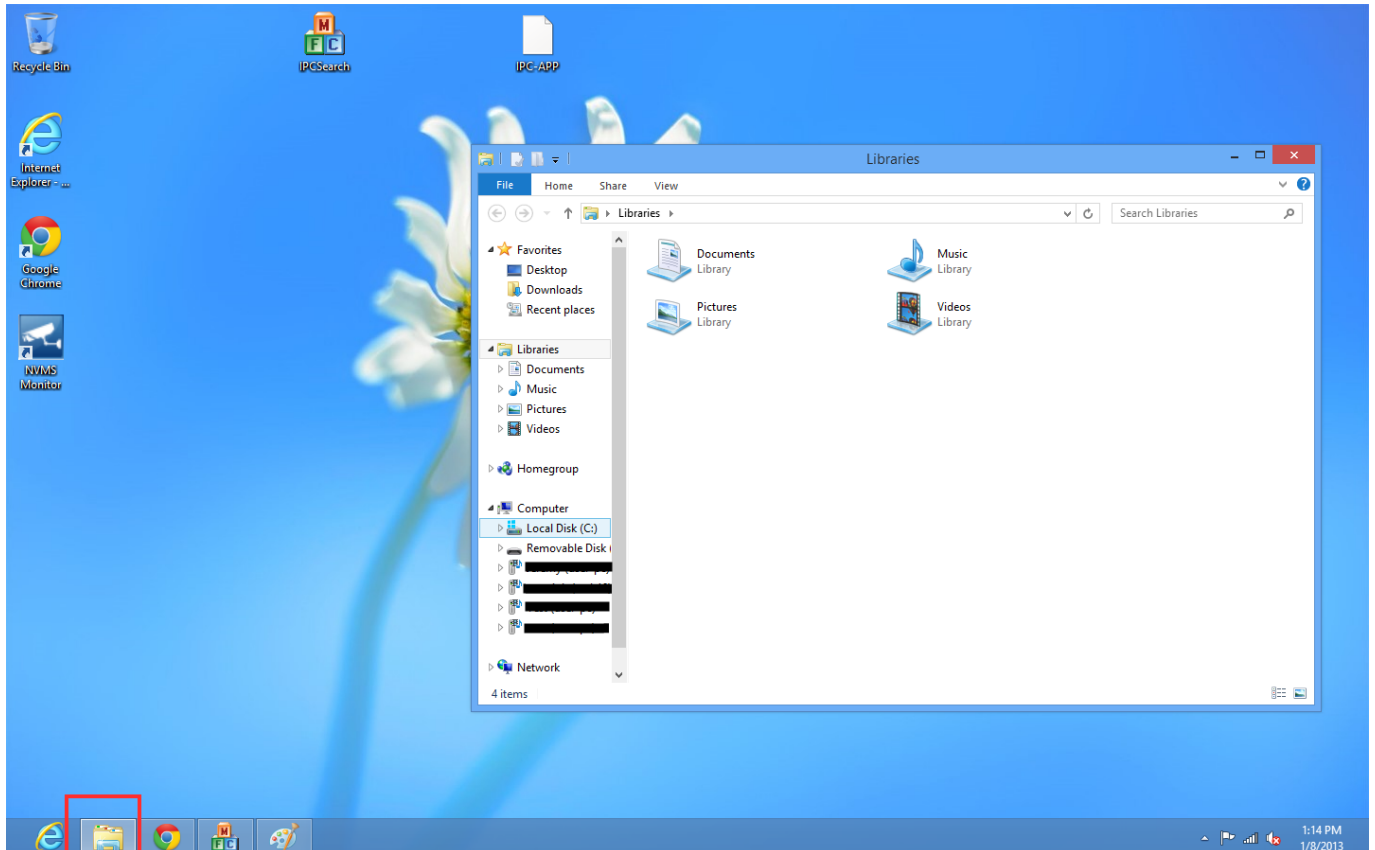


DVR Systems

Run Internet Explorer 32-Bit on Windows 8

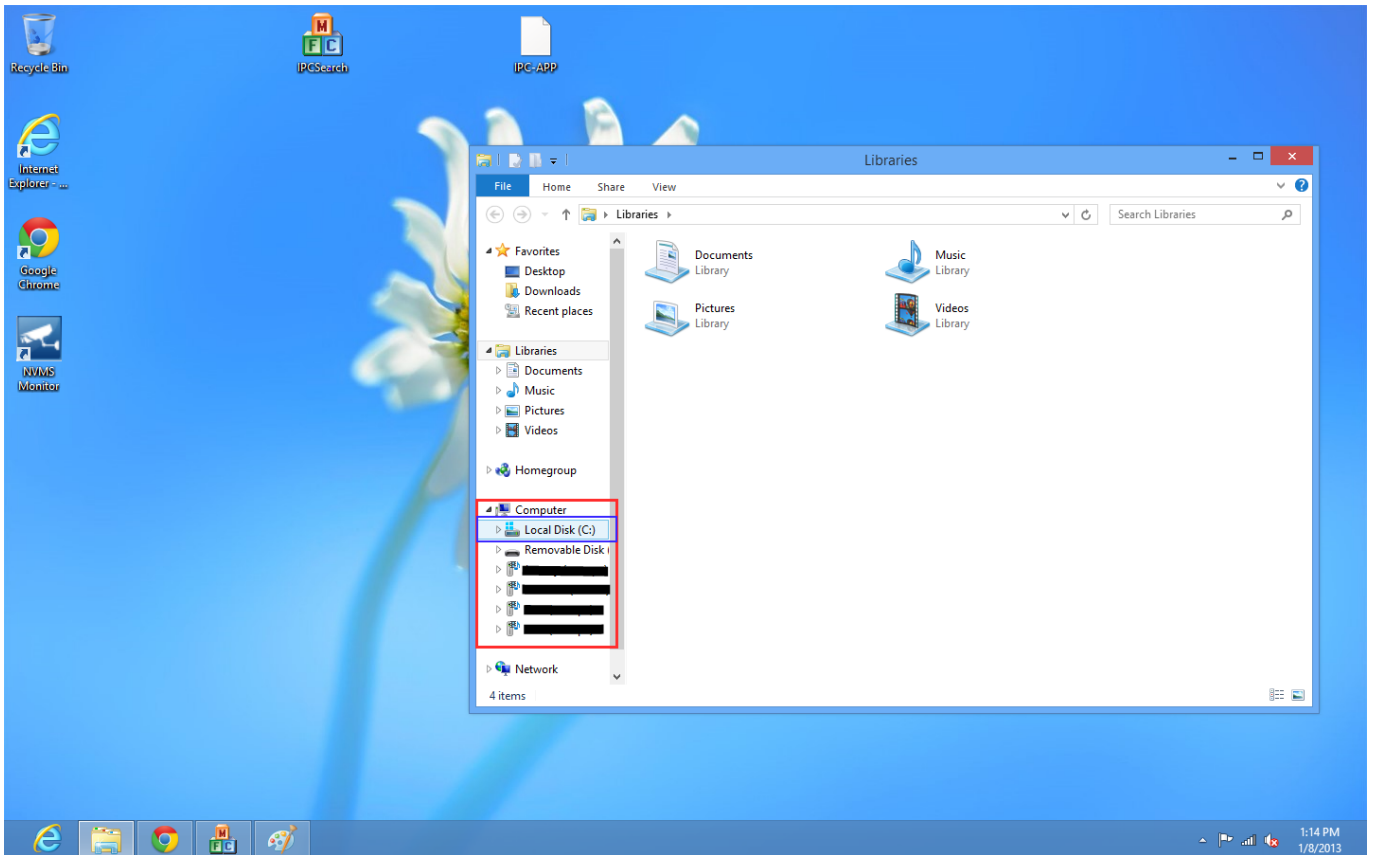
Most computers that ship with Windows 8 utilize a 64-bit operating system. In order to make the Add-On run, we need to make sure we run the 32-bit version of Internet Explorer. This is applicable to almost all of our DVRs, NVRs, and IP Cameras.

Step 1: Find the Windows Explorer icon in your Taskbar and click on it. It should be right next to the Internet Explorer icon.



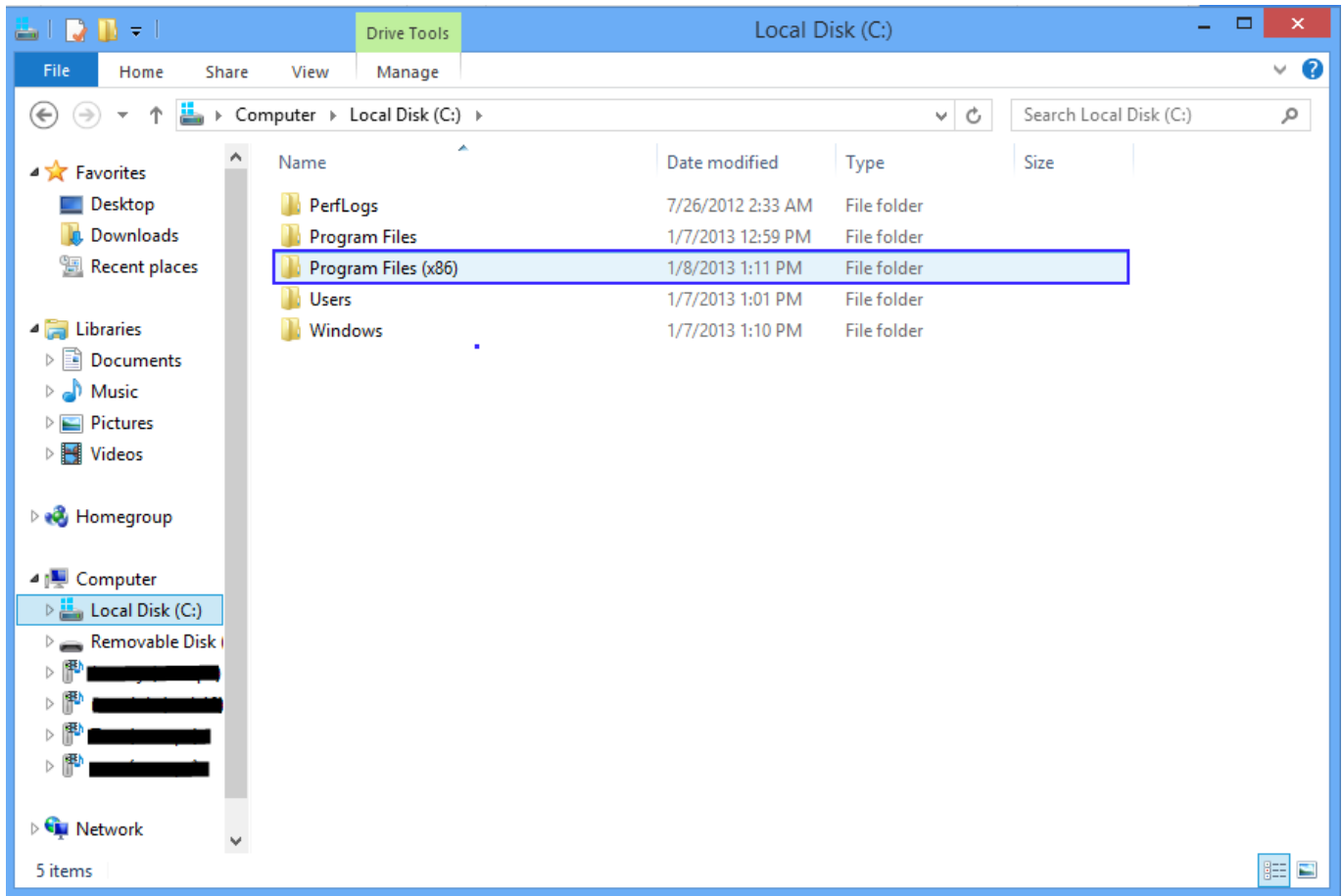
Step 2: Find "Local Disk (C:)" underneath "Computer" and click on it once.

DVR Systems



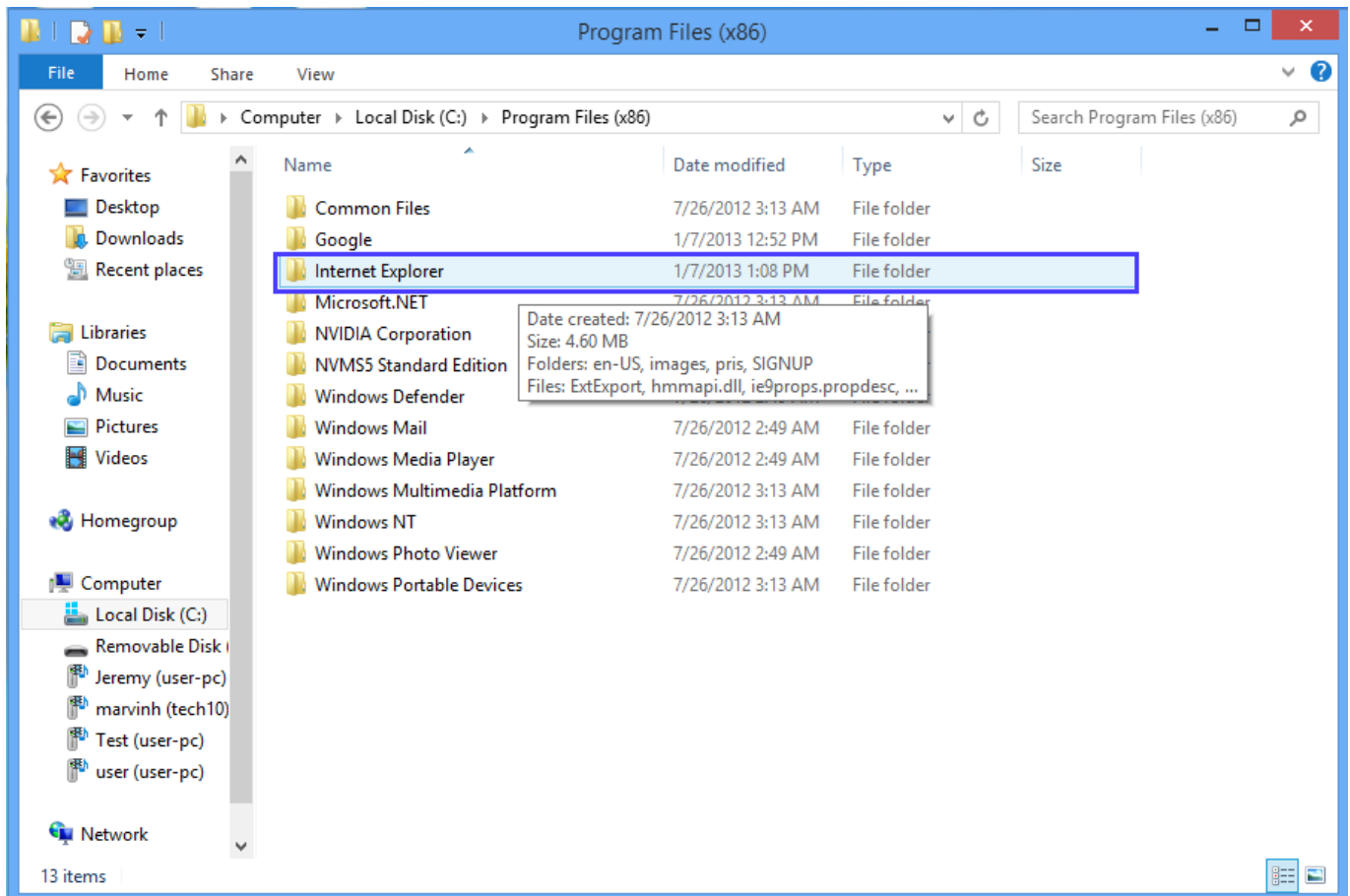
Step 3: Find Program Files (x86) in the list and double-click on it.

DVR Systems



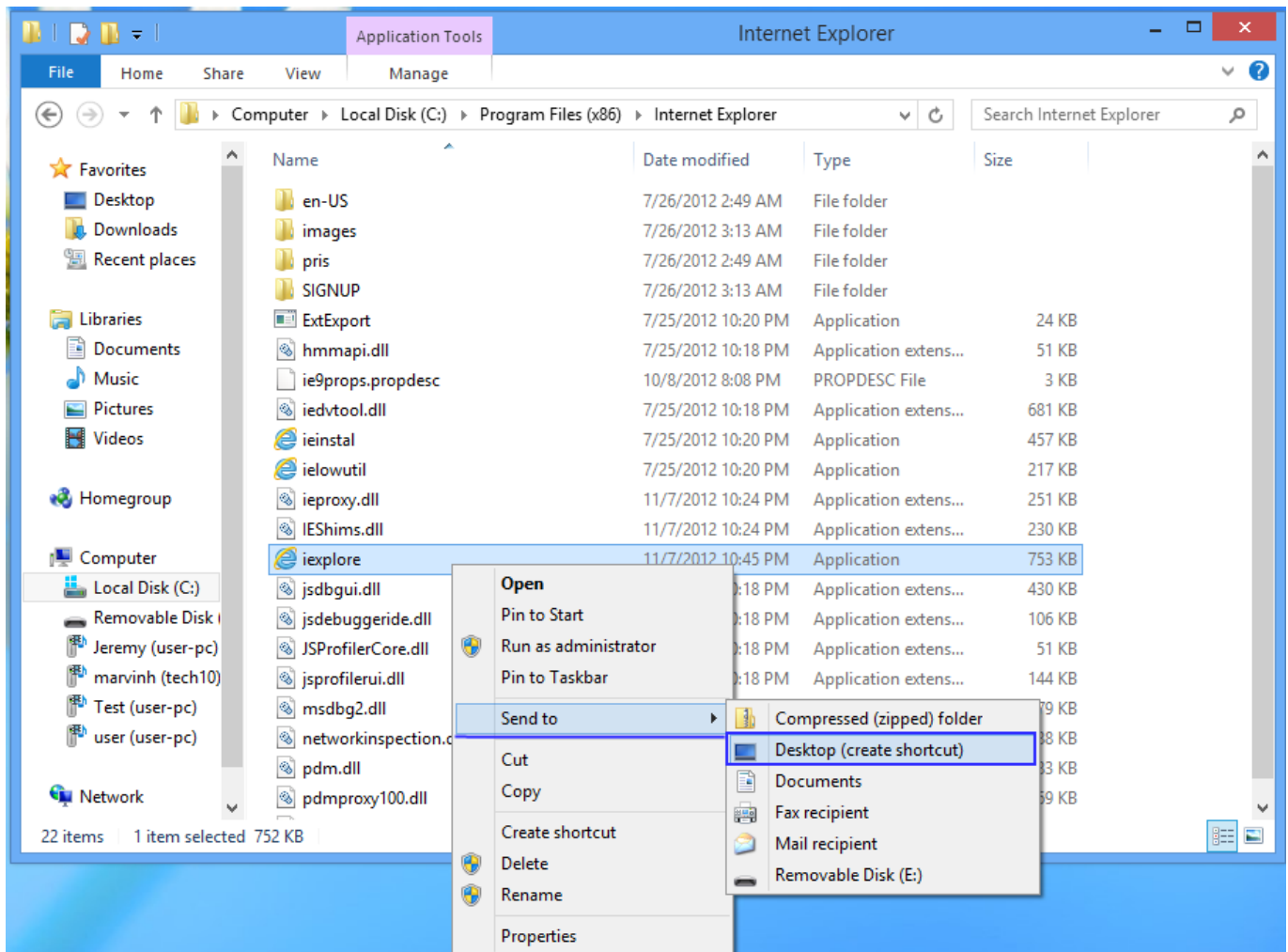
Step 4: Find "Internet Explorer" in the list and then double-click on it.

DVR Systems



Step 5: Find "iexplorer" in the folder and right-click on it. A menu will pop up and you need to choose "Send to" and then select "Desktop (create shortcut)".

DVR Systems



Step 6: You will now have a shortcut on your Desktop to the 32-bit version of Internet Explorer. When accessing your DVR, always use this new shortcut.

Page 5 / 6

(c) 2024 Jeremy Schultz <itmanager@eptco.com> | 2024-12-21 19:39

URL: <https://kb.zmodo.com/index.php?action=artikel&cat=163&id=67&artlang=en>

DVR Systems

Reminder: When running Internet Explorer and using your DVR, right-click and choose "Run As Administrator" when you open it.

Unique solution ID: #1066

Author: Alex Crewell

Last update: 2013-12-05 13:36