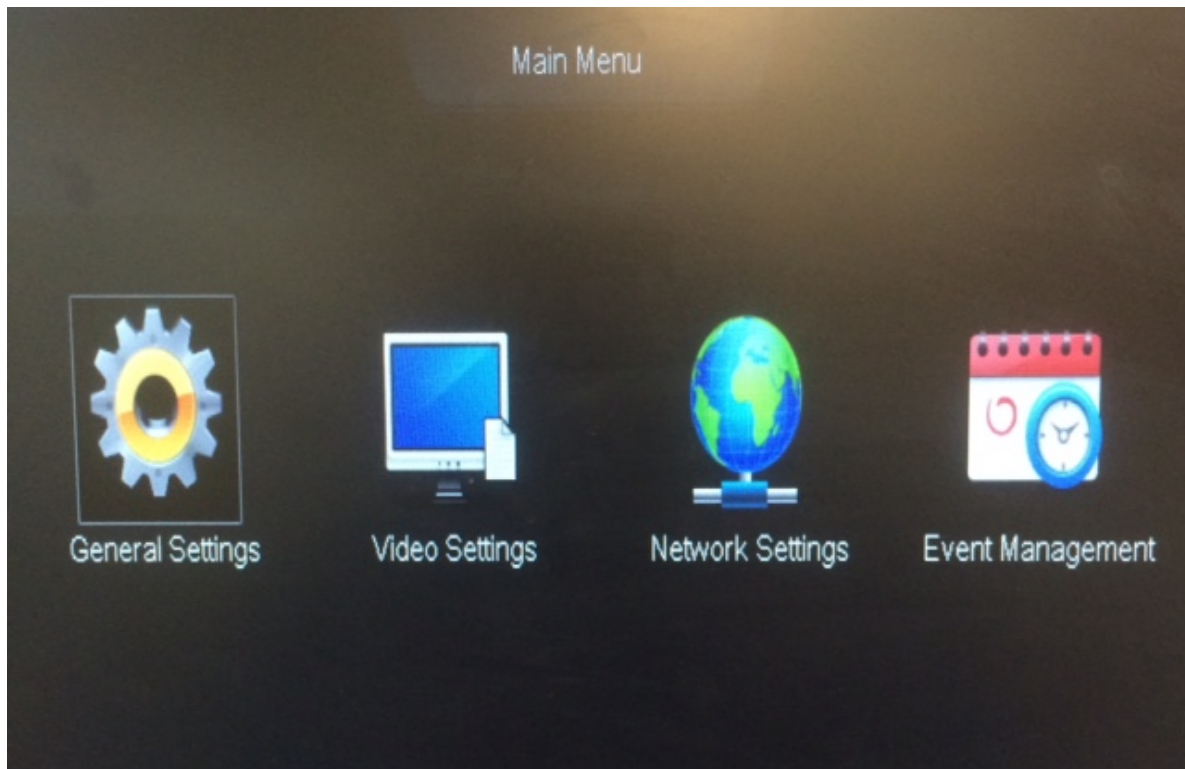


ZMD-DT-SJN6

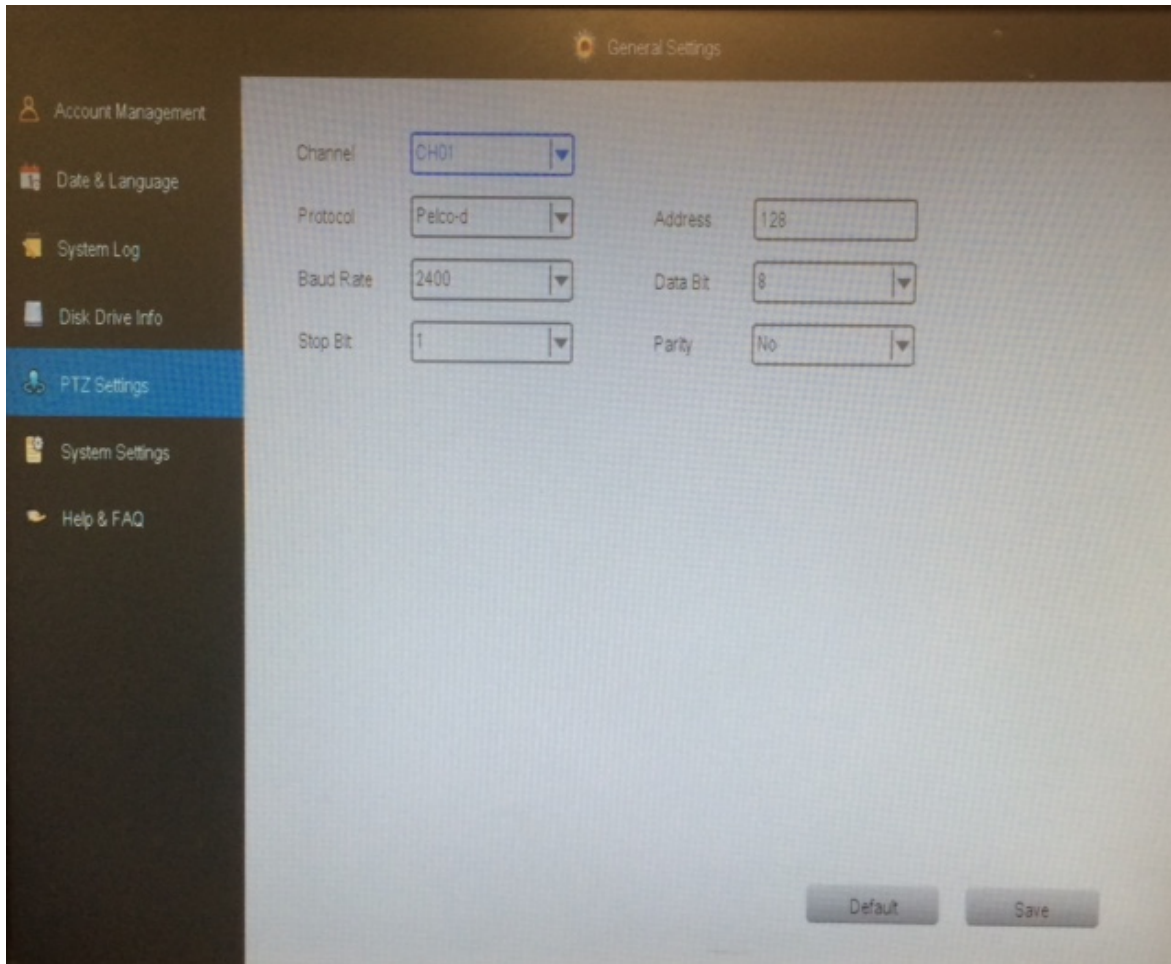
Set up cruise with 2213GY PTZ camera on the SJN6 DVR system

In order to program preset points, be sure to have first set the cameras address correctly in the settings menu. From the main menu, click on "general settings".



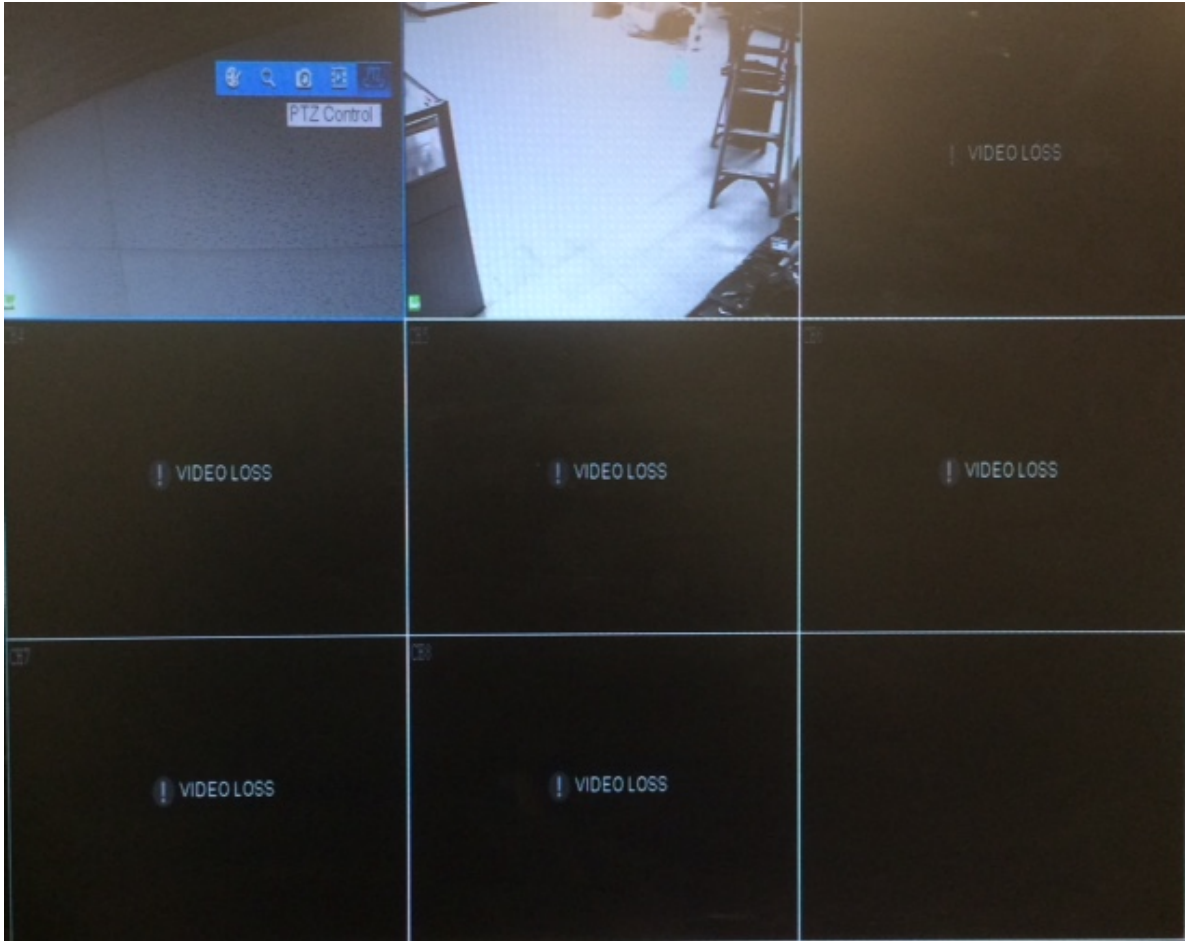
From the general settings menu, click on "PTZ settings" from the left column. There you can enter the info from your PTZ camera. Basic settings require the channel, protocol, baud rate, and address in order for the camera to move on command.

ZMD-DT-SJN6



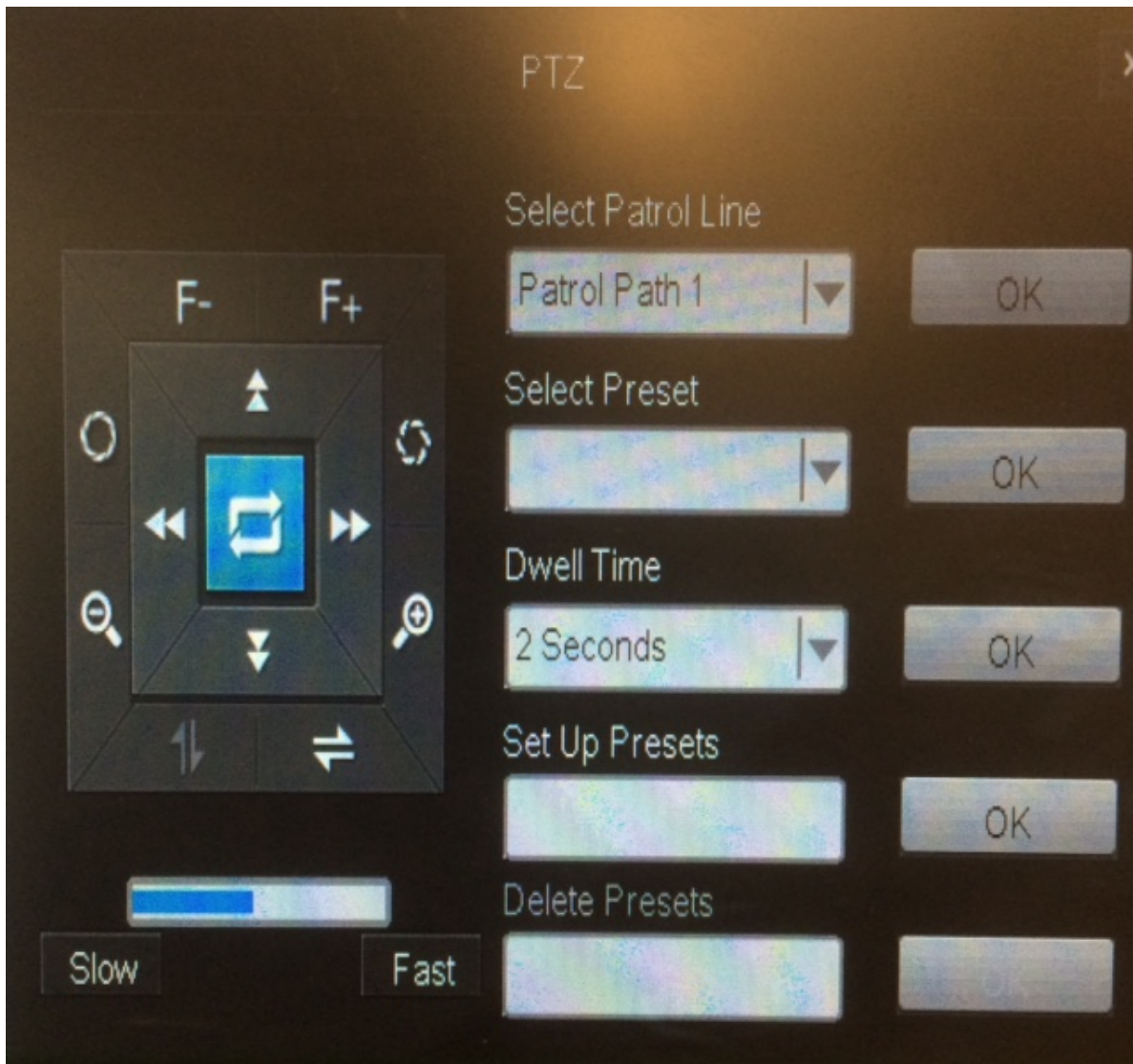
Once you are able to control the movement of the camera, you can set up the presets. From the main camera display, right click on the channel that you want to set up. You'll see a small blue tool bar appear. Click on the PTZ option.

ZMD-DT-SJN6



Once you click on the PTZ option the menu below will appear. Here you can program the presets for the cruise pattern.

ZMD-DT-SJN6



Using this controller, you can move the camera to the desired position, enter numbers between 1-16 in the "Set Up Presets" field to program "Patrol Path 1". Once you have the presets entered, click OK next to "Patrol Path 1" and the camera will begin the tour. "Patrol Path 2" uses presets 17-32.

****The SJN6 DVR is only compatible for cruise with the CM-Z2213GY PTZ camera at this time****

Unique solution ID: #1353

Author: Jamie Alksnis

Last update: 2015-03-24 16:26