

NVR and IP Cameras

Enabling Motion Detection on the NVR (New Interface)

The following are all motion detection enabling steps once you've updated all new firmware onto the IP Cameras and NVR. Any camera with FW versions of 1.0.1X-D should be compatible. If your firmware contains 1.2.XX or 1.1.XX, please contact Zmodo directly for assistance:

1. Log into the IP Camera using Internet Explorer (Step 1 will need to be performed on all IP Cameras)

a. Go to **Remote Configuration > Alarm Setting**



b. From the Alarm Setting page, check the check-box labeled **Motion Detect**

c. Adjust the start and end time to read "00:00:00 - 23:59:00"

d. Left-click any squares in the grid that you do want to detect motion. Any non-orange squares in the grid will ignore motion. In this new firmware, you can click-and-drag over the squares to quickly select squares.

NVR and IP Cameras

e. In the "Alarm Method" box, check **Upload**.

f. Click **Submit** to save these changes.

2. From the NVR, go to Main Menu > Setting > Motion Alarm



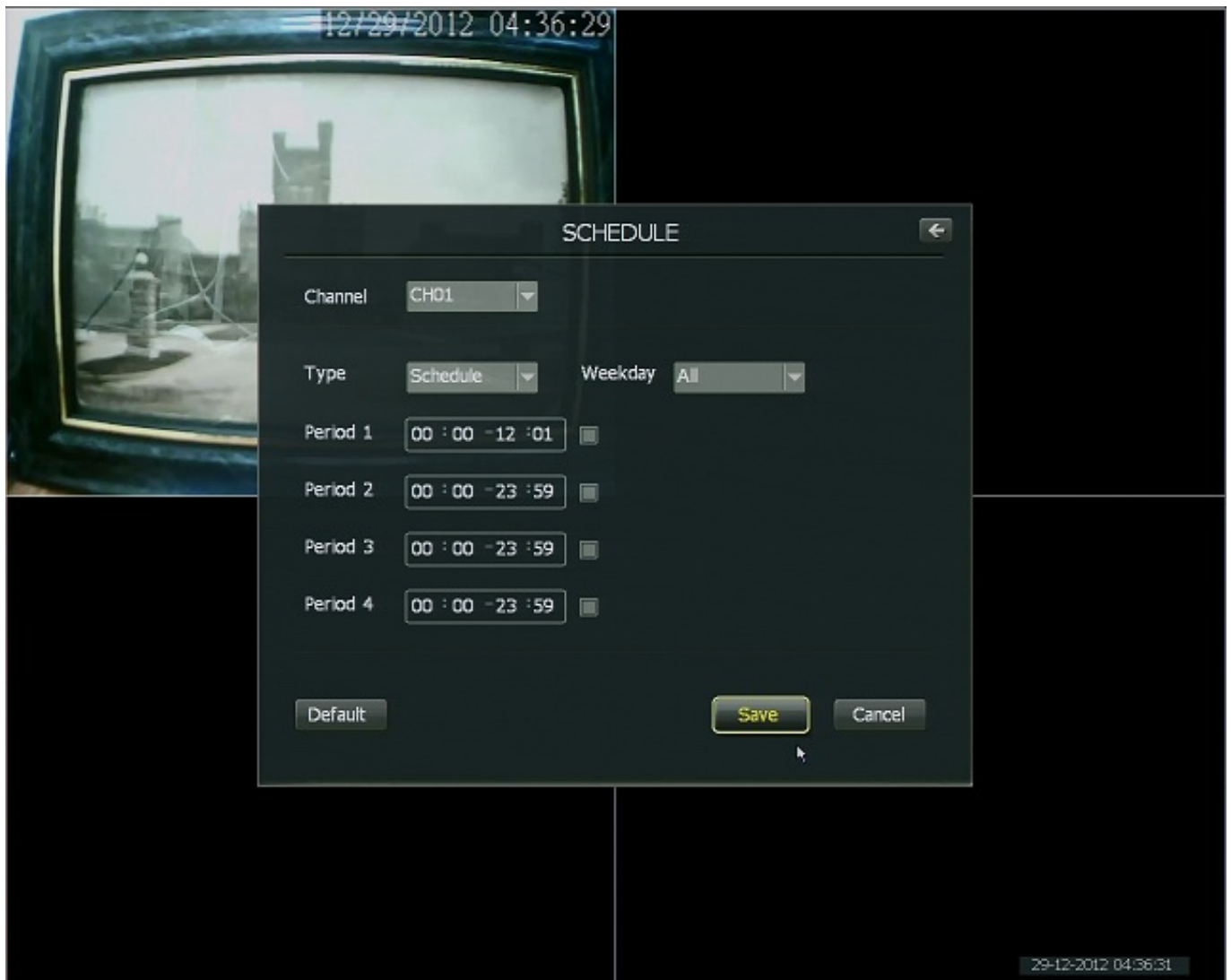
a. Check the check-box to enable **Record** for all channels in this menu.

b. Set the alarm delay to a number between 1 - 9 seconds.

c. Click "Save" to save these changes.

3. From the NVR, go to **Main Menu > Setting > Schedule**

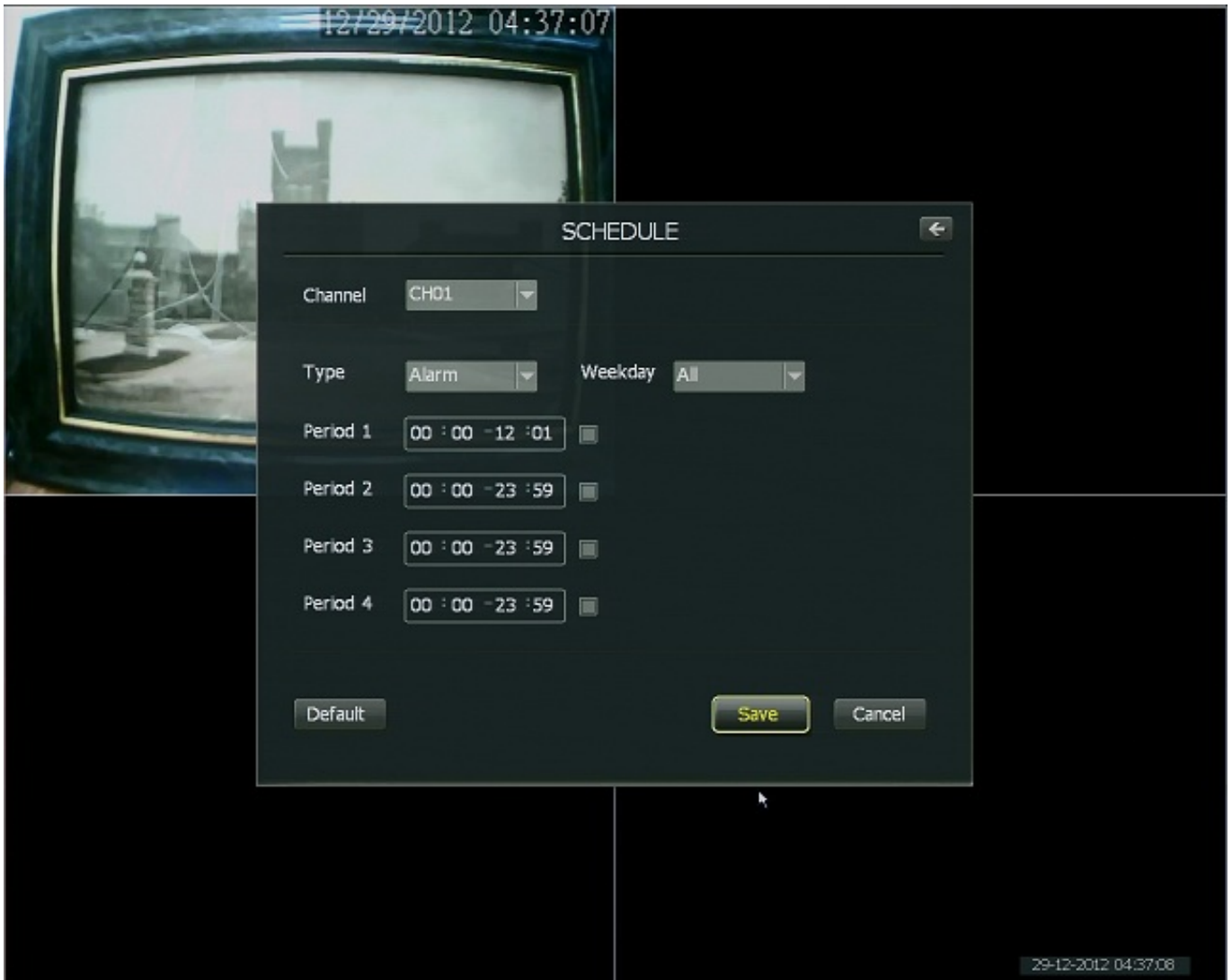
NVR and IP Cameras



From the **Schedule** page, change the following settings:

- a. Change Channel: CH01 to ALL
- b. Change Weekday: Sun to ALL
- c. From the Schedule Tab (accessed by selecting "Schedule" in the drop-down box) disable Period1. This will disable scheduled recording.
- d. Click Save.

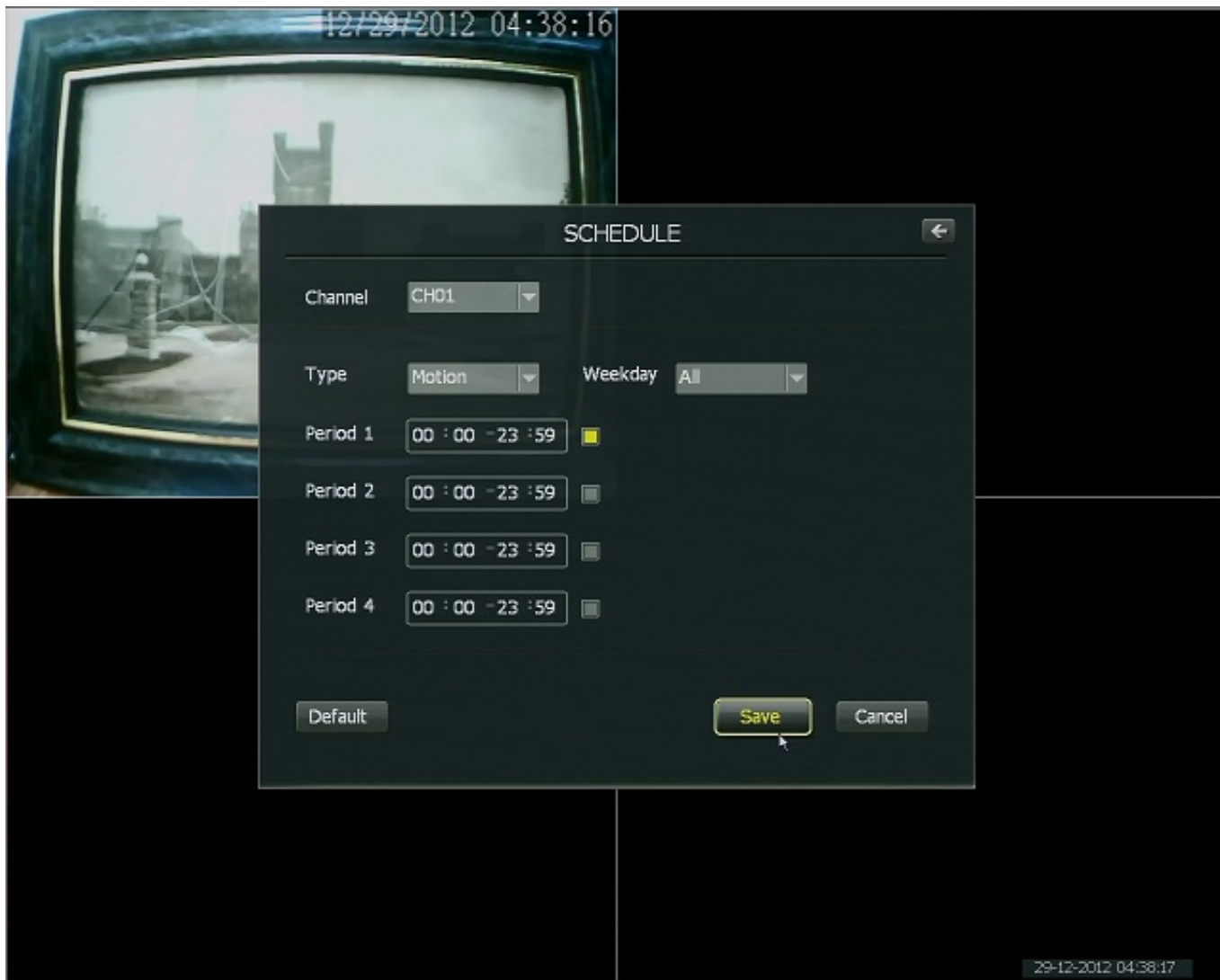
NVR and IP Cameras



e. From the Alarm Tab (accessed by selecting "Alarm" in the drop-down box) make sure Period1 is disabled. This will ensure that Alarm-based recording is disabled.

f. Click Save.

NVR and IP Cameras



g. From the Motion Tab (accessed by selecting "Motion" in the drop-down box) set the time range to 00:00 – 23:59 in the Period1 field. Enable Period1 by selecting its check-box. This will enable motion recording.

h. Click Save.

NVR and IP Cameras



4. After saving those changes, exit out to the camera grid. When one of the cameras detects motion, the NVR will display a red M on the screen as it records for the duration of time that motion takes place.

NVR and IP Cameras



**When you go into the playback menu, you will see that any video that was recorded based on motion detection will be in yellow.

Unique solution ID: #1009

Author: Patricia Pyle

Last update: 2015-03-23 10:48