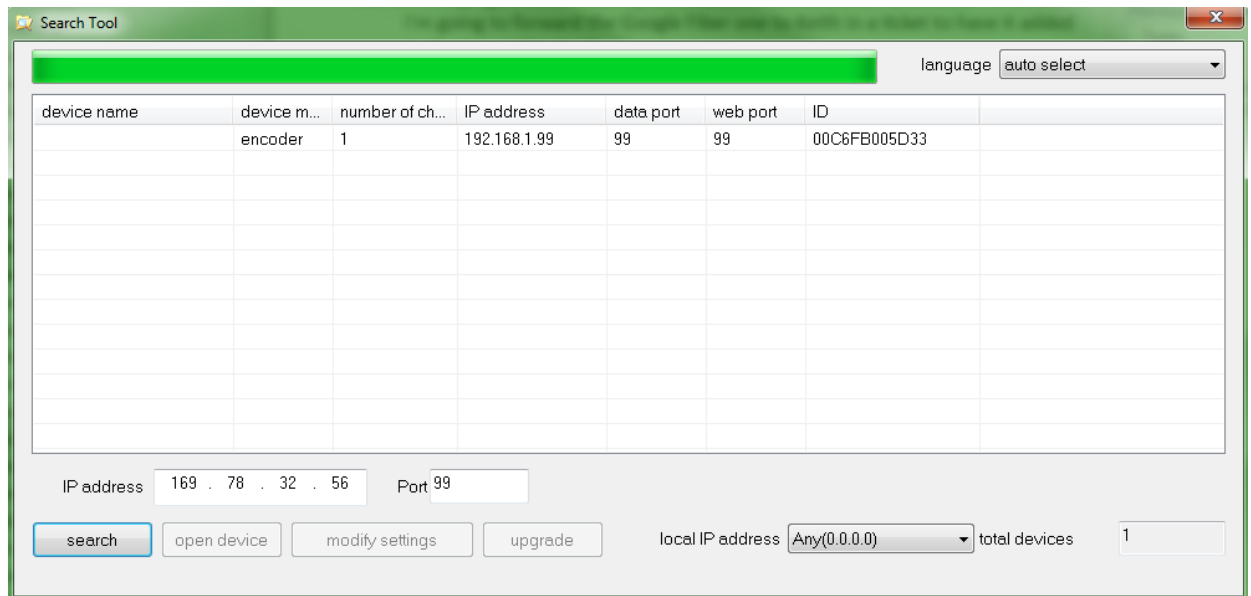


NVR and IP Cameras

CM-I11123BK / CM-I12316GY - Wifi Setup Guide

The CM-I11123BK and the CM-I12316GY share the same software and the same setup instructions. Before starting the setup, please make sure that your camera powered on and plugged into your router with the included ethernet cable.

1. Install the search tool from the included software disc. If you do not have the software disc, you can download it from: [HERE](#)
2. Open the search tool and click "Search". It should find the camera at it's default IP of 192.168.1.99



3. Highlight the camera in the search tool and click "Modify Settings".
4. Put a check next to "Enable DHCP", type "admin" into the box next to username, and then click "OK".

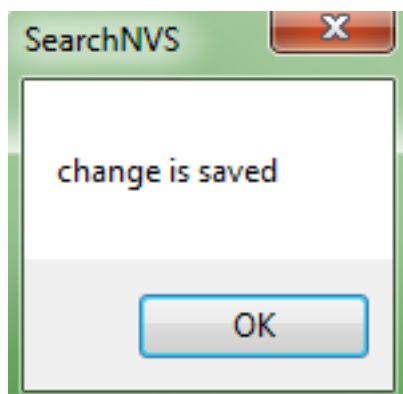
NVR and IP Cameras

The screenshot shows a 'network settings' window with the following fields and values:

- device model: encoder
- device name: (empty)
- number of channels: 1
- ID: 00C6FB005D33
- enable DHCP:
- IP address: 192 . 168 . 1 . 99
- subnet mask: 255 . 255 . 255 . 0
- gateway: 192 . 168 . 1 . 1
- data port: 99
- web port: 99
- DNS IP address: 172 . 18 . 16 . 1
- multicast IP address: 255 . 255 . 255 . 255
- multicast port: 0
- Username: admin
- Password: (empty)

At the bottom, there is a checkbox for 'Restart after change is saved' and two buttons: 'OK' and 'Cancel'.

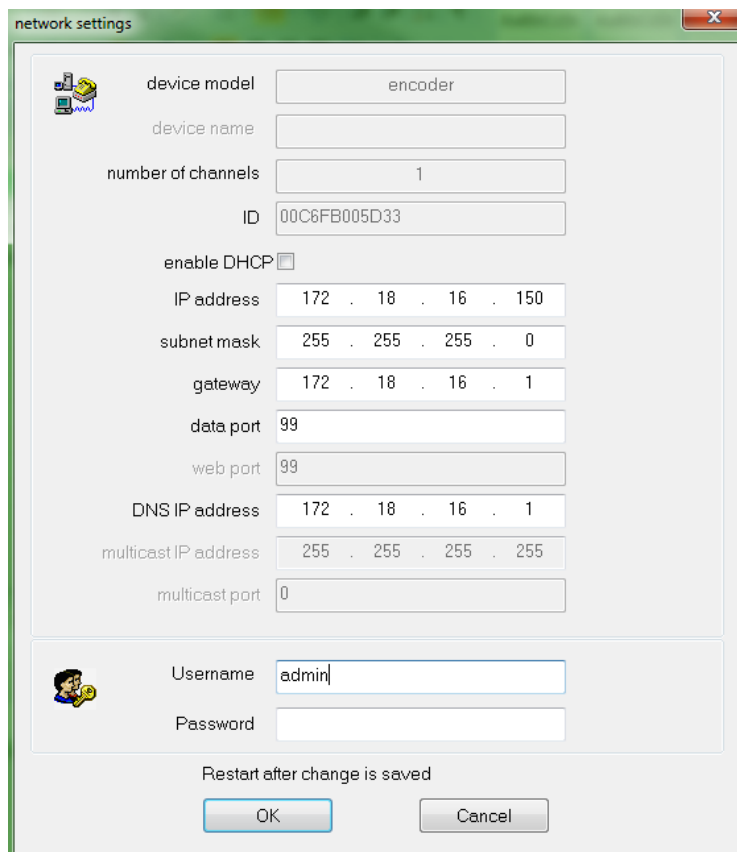
5. After clicking OK, the camera will tell you "change is saved".



6. Wait for 1 minute then hit "Search". Highlight the camera, and click "Modify Settings" again.

7. Uncheck "Enable DHCP" and find the IP Address. Add 50 to the last number in the set. For example, if your IP says 192.168.1.23, change it to 192.168.1.73. Type the username "admin" in and click "OK".

NVR and IP Cameras



The 'network settings' dialog box contains the following fields and options:

- device model: encoder
- device name: (empty)
- number of channels: 1
- ID: 00C6FB005D33
- enable DHCP:
- IP address: 172 . 18 . 16 . 150
- subnet mask: 255 . 255 . 255 . 0
- gateway: 172 . 18 . 16 . 1
- data port: 99
- web port: 99
- DNS IP address: 172 . 18 . 16 . 1
- multicast IP address: 255 . 255 . 255 . 255
- multicast port: 0
- Username: admin
- Password: (empty)

Restart after change is saved

Buttons: OK, Cancel

8. Wait for approximately 1 minute, and click "Search" again.
9. Highlight the camera in the search tool and choose "Open Device". This will open the camera in Internet Explorer.
10. Type in the username "admin" and click "OK" to login. There is no password by default.



The 'Windows Security' dialog box displays the following information:

The server 172.18.16.150 is asking for your user name and password. The server reports that it is from ipcamera_00C6FB005D33.

Warning: Your user name and password will be sent using basic authentication on a connection that isn't secure.

Fields and options:

- User name: (empty)
- Password: (empty)
- Remember my credentials:

Buttons: OK, Cancel

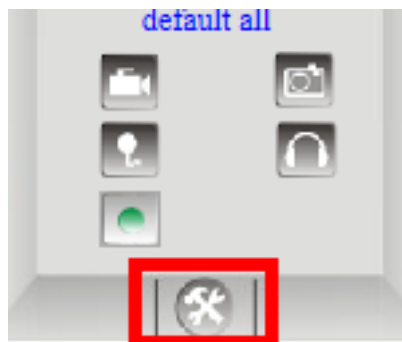
NVR and IP Cameras

11. Click "Sign in" under "ActiveX Mode (For IE Browser)"



12. Internet Explorer will now install the add-on. Accept or allow any prompts to install software at this point. If it doesn't work, you may need to configure your ActiveX controls as explained: [HERE](#)

13. Click the "Settings" icon in the bottom right of the page.



14. In the column on the right hand side, choose "Wireless Lan Settings"

NVR and IP Cameras

Device Info
Alias Settings
Date&Time Settings
Users Settings
Multi-Device Settings
Basic Network Settings
Wireless Lan Settings
ADSL Settings
UPnP Settings
DDNS Service Settings
Mail Service Settings
Ftp Service Settings
Alarm Service Settings
PTZ Settings
Decoder Settings
Upgrade Device Firmware
Backup & Restore Settings
Restore Factory Settings
Reboot Device
Log
Back

- Click the "Scan" button 2-3 times. Your wireless network should show up in the list.

Wireless Lan Settings			
Wireless Network List	<table border="1"><tr><td>TestWiFi[4e00b8a38650] infra WPA/WPA2-PSK</td></tr><tr><td>CallCenter[000050465d6c] infra WPA/WPA2-PSK</td></tr></table>	TestWiFi[4e00b8a38650] infra WPA/WPA2-PSK	CallCenter[000050465d6c] infra WPA/WPA2-PSK
TestWiFi[4e00b8a38650] infra WPA/WPA2-PSK			
CallCenter[000050465d6c] infra WPA/WPA2-PSK			
	<input type="button" value="Scan"/>		
Using Wireless Lan	<input checked="" type="checkbox"/>		
SSID	<input type="text" value="TestWiFi"/>		
Network Type	<input type="text" value="Infra"/>		
Encryption	<input type="text" value="WPA2 Personal (TKIP)"/>		
Share Key	<input type="text" value="testingcam"/>		
	<input type="button" value="Submit"/> <input type="button" value="Refresh"/>		

- Type your WiFi password in the "Share Key" field and then click submit. The screen will change and start a 30 second countdown. Remove the ethernet cable with 20-25 seconds left.

The device is rebooting. Don't shutdown it's power. Please waiting ... 28

NVR and IP Cameras

17. After the countdown is complete, wait another 10-15 seconds and hit Search in the tool again. If the camera is detected, your camera is now on wireless and you can put the camera where you would like.

18. To set up recording, we recommend using the software ISPY and it can be located: [HERE](#)

Unique solution ID: #1287

Author: Bryant Irwin

Last update: 2014-01-13 16:39