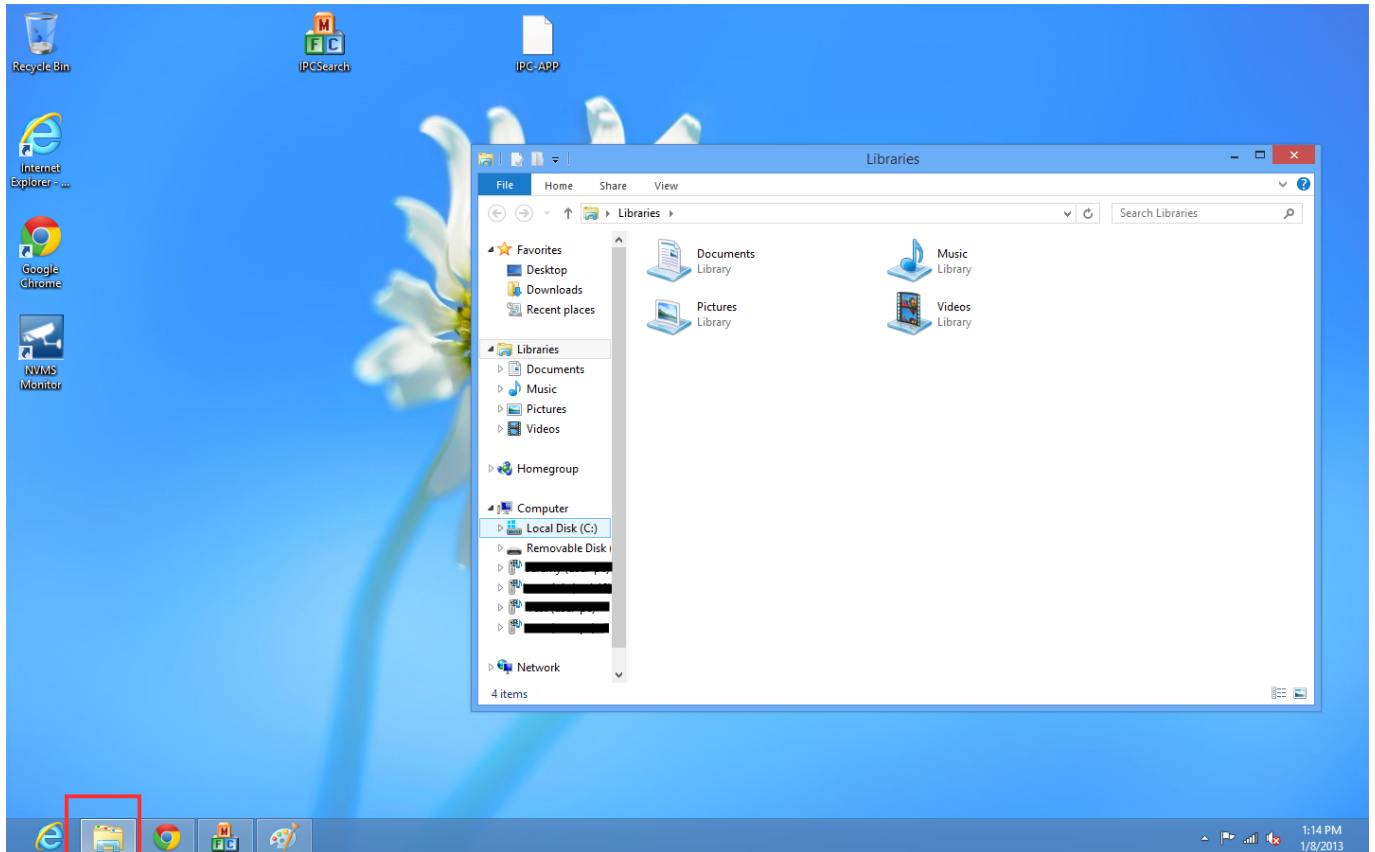


NVR and IP Cameras

Run Internet Explorer 32-Bit on Windows 8

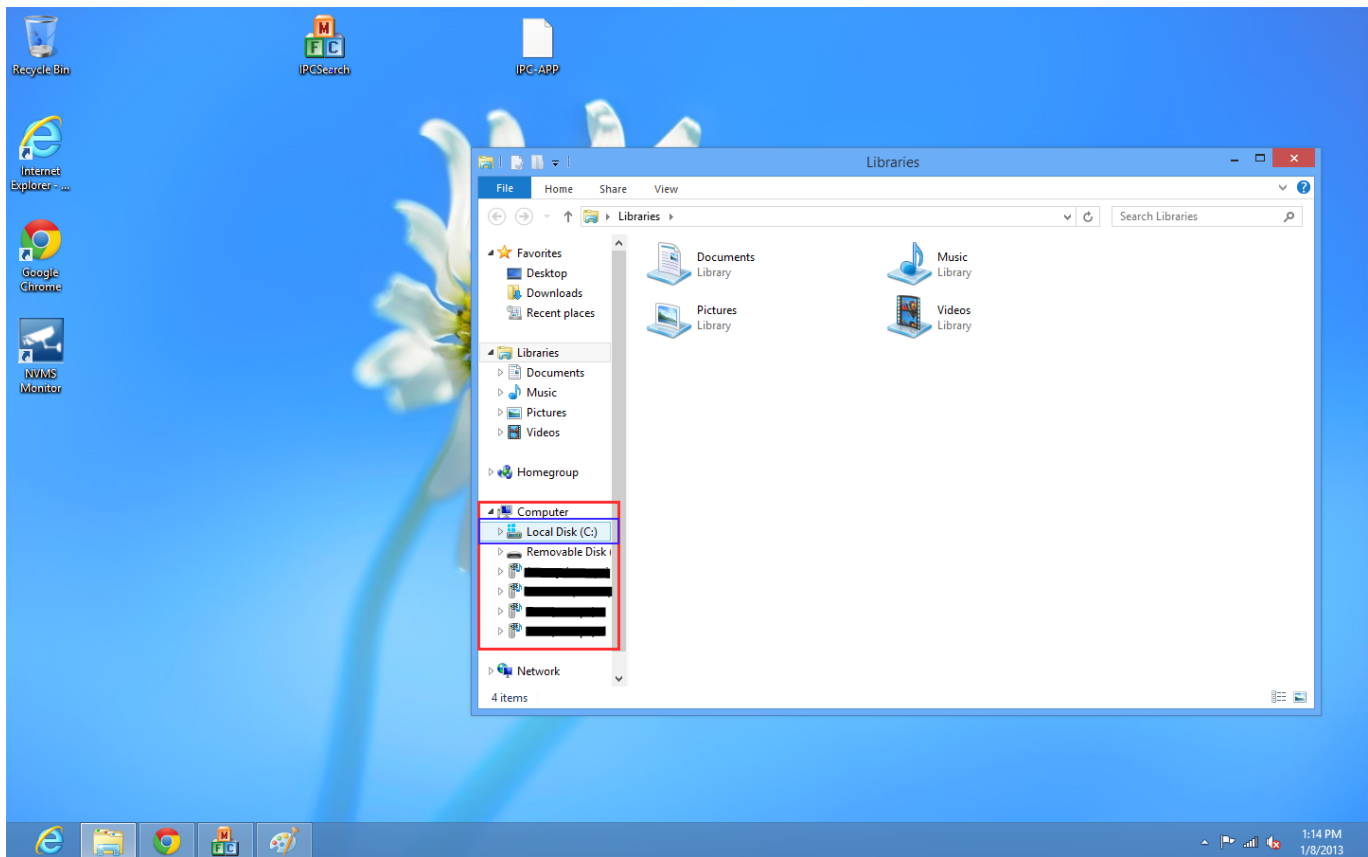
Most computers that ship with Windows 8 utilize a 64-bit operating system. In order to make the Add-On run, we need to make sure we run the 32-bit version of Internet Explorer. This is applicable to almost all of our DVRs, NVRs, and IP Cameras.

Step 1: Find the Windows Explorer icon in your Taskbar and click on it. It should be right next to the Internet Explorer icon.



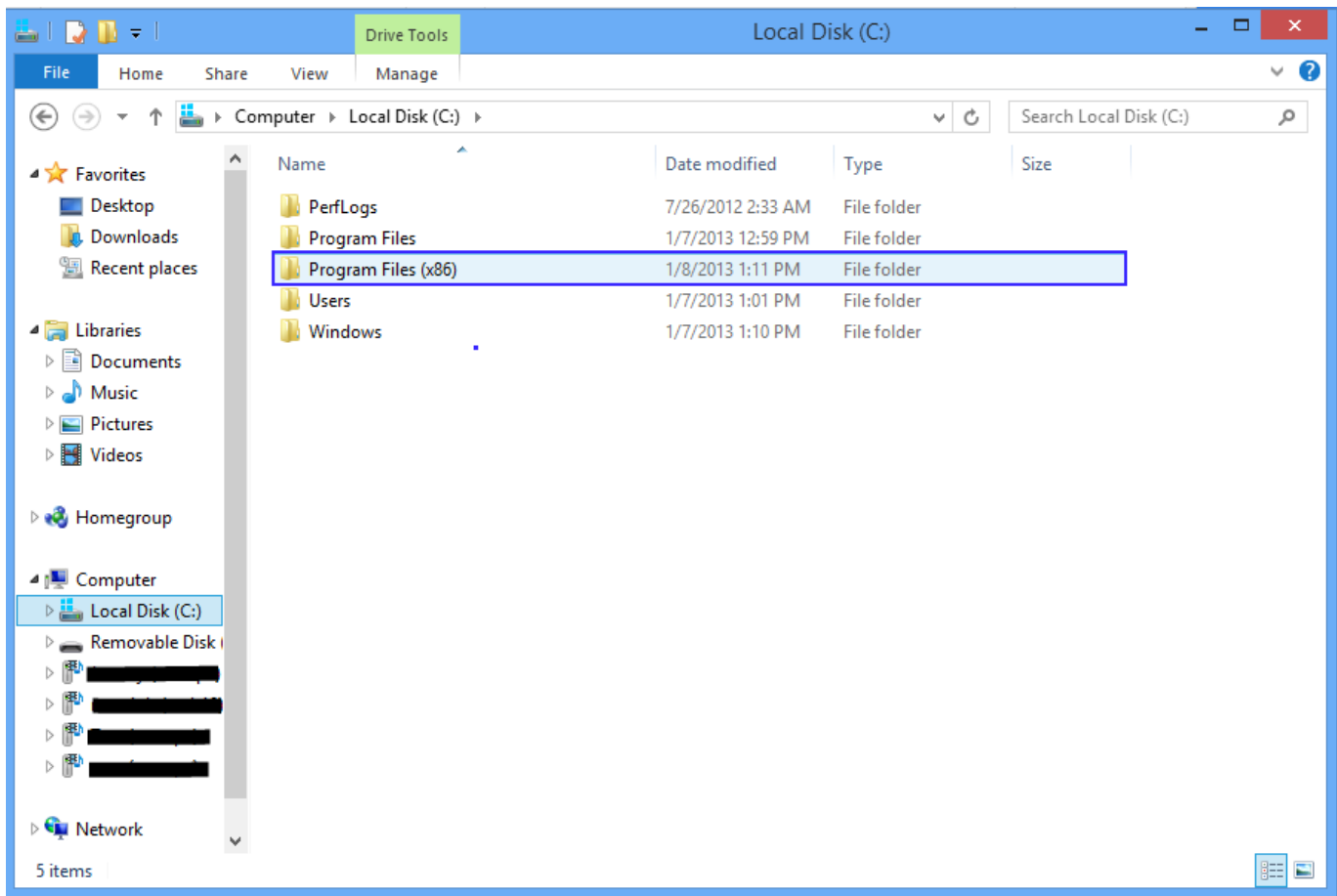
Step 2: Find "Local Disk (C:)" underneath "Computer" and click on it once.

NVR and IP Cameras



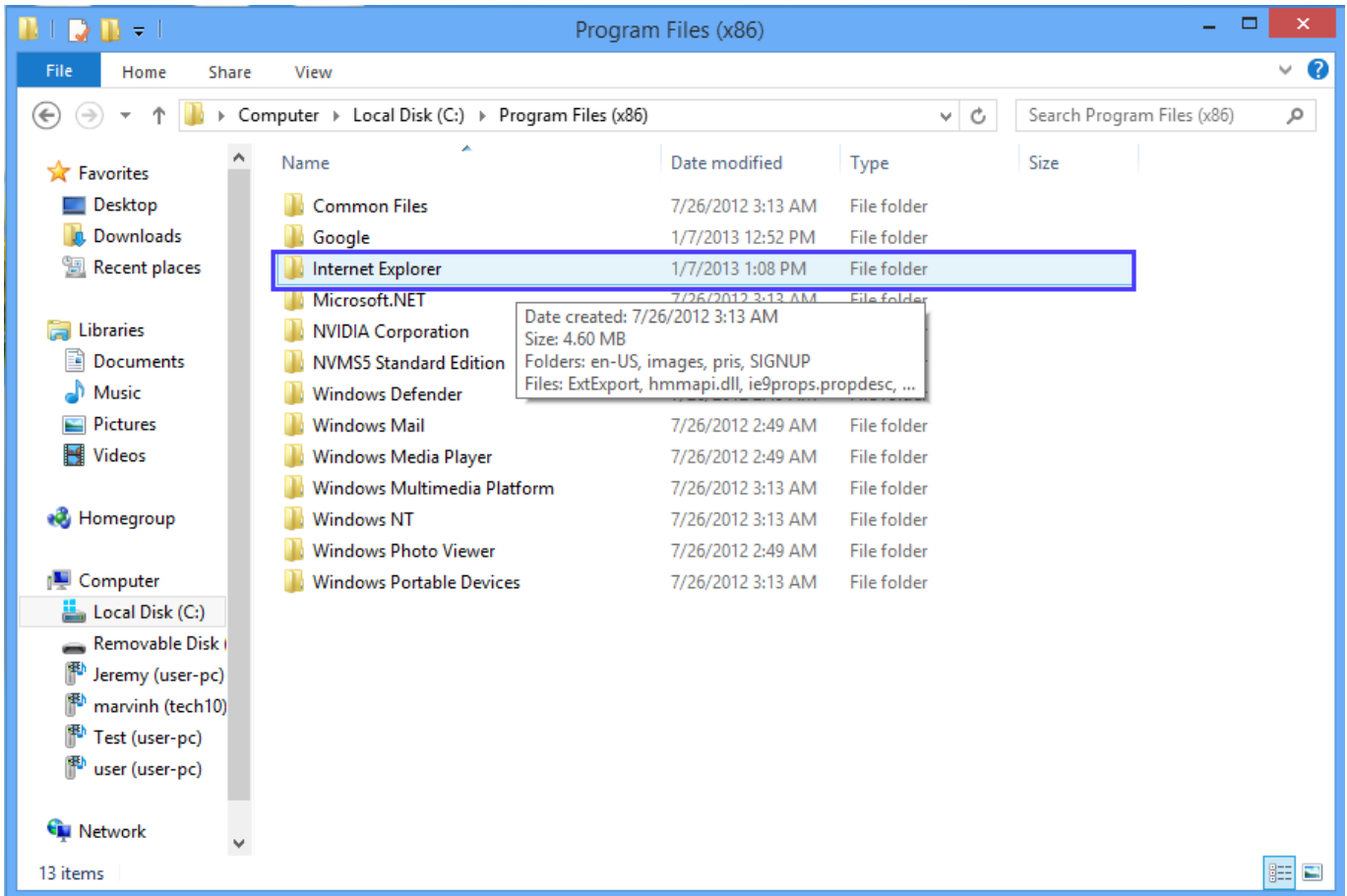
Step 3: Find Program Files (x86) in the list and double-click on it.

NVR and IP Cameras



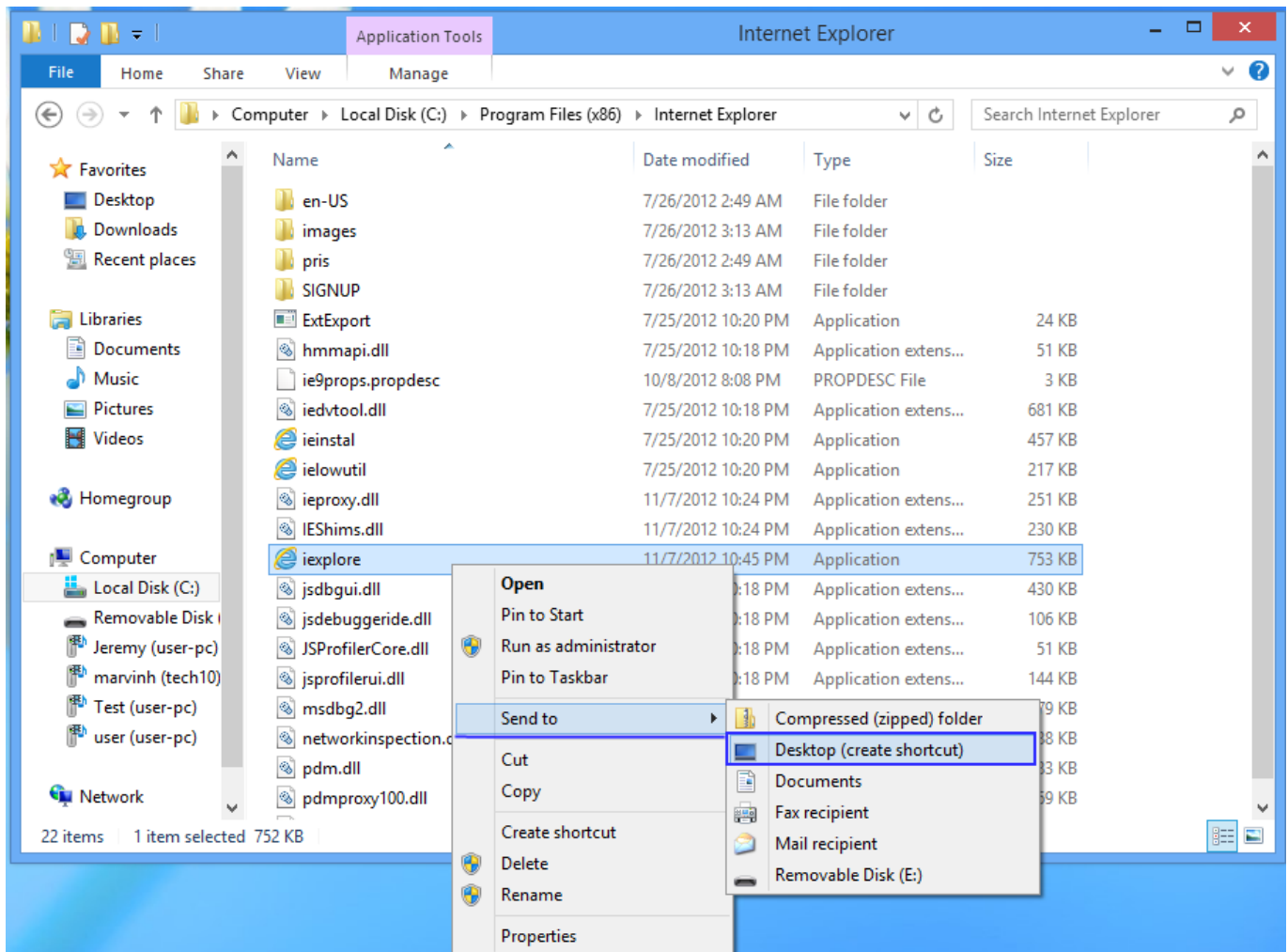
Step 4: Find "Internet Explorer" in the list and then double-click on it.

NVR and IP Cameras



Step 5: Find "iexplorer" in the folder and right-click on it. A menu will pop up and you need to choose "Send to" and then select "Desktop (create shortcut)".

NVR and IP Cameras



Step 6: You will now have a shortcut on your Desktop to the 32-bit version of Internet Explorer. When accessing your DVR, always use this new shortcut.

NVR and IP Cameras

Reminder: When running Internet Explorer and using your DVR, right-click and choose "Run As Administrator" when you open it.

Unique solution ID: #1066

Author: Alex Crewell

Last update: 2013-12-05 13:36