

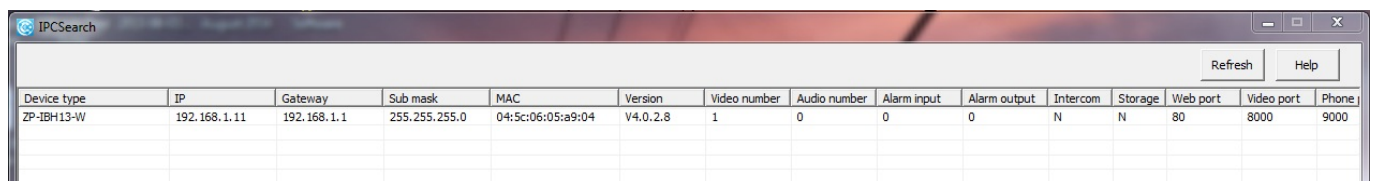
ZP-KB1104-W

How to View a QR Code Scan Device Using an Internet Explorer Browser

The IP Cameras, NVRs, and DVRs that have a QR scan code are designed to be viewed from the mobile app called ZSight, however you do have the option of logging into a QR code device and viewing it from Internet Explorer.

First, click this link to download a program called IPC Search: http://www.zmodo.com/media/downloader/ZH-IXA15-WC/IPCSearch1.0.13_Setup.exe

Next, run IPC Search from a computer that is connected to the same router that your QR code device is connected to. IPC Search will show all of the Zmodo QR code devices that are on that router.



The screenshot shows the IPCSearch application window with a table of discovered devices. The table has 15 columns: Device type, IP, Gateway, Sub mask, MAC, Version, Video number, Audio number, Alarm input, Alarm output, Intercom, Storage, Web port, Video port, and Phone. The first row contains the following data: ZP-IBH13-W, 192.168.1.11, 192.168.1.1, 255.255.255.0, 04:5c:06:05:a9:04, V4.0.2.8, 1, 0, 0, 0, N, N, 80, 8000, 9000.

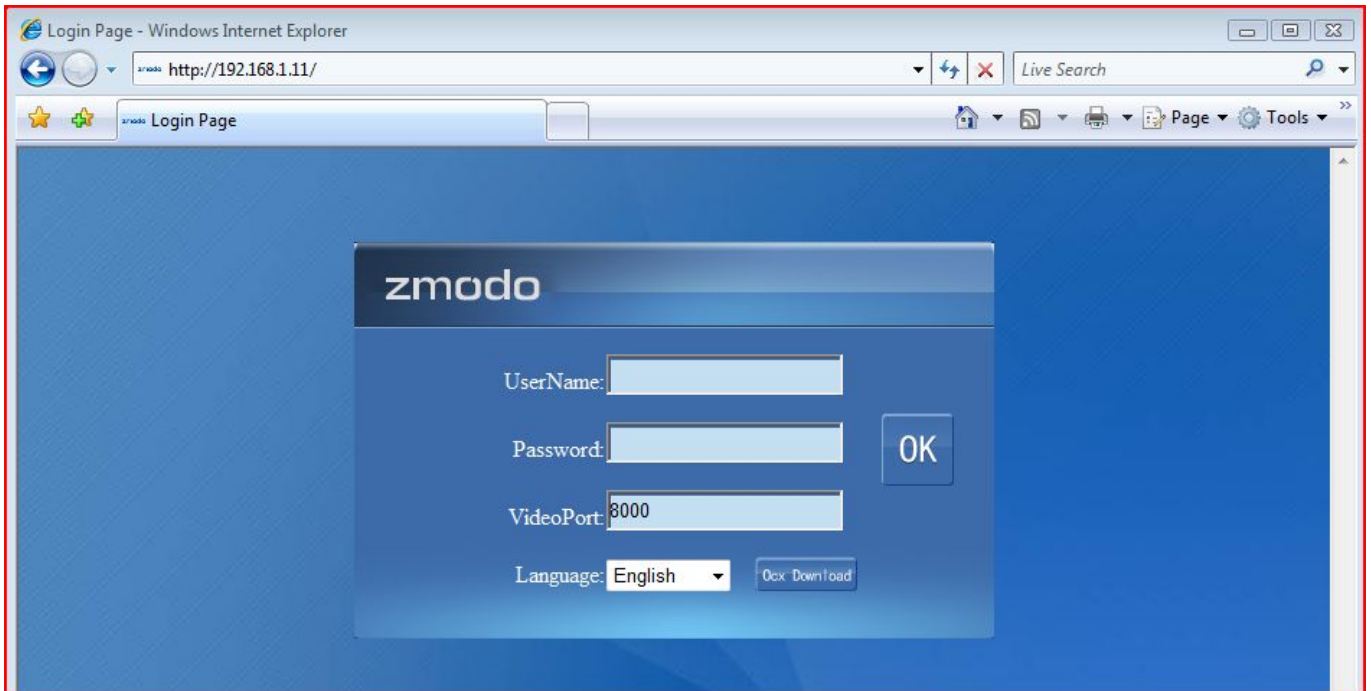
Device type	IP	Gateway	Sub mask	MAC	Version	Video number	Audio number	Alarm input	Alarm output	Intercom	Storage	Web port	Video port	Phone
ZP-IBH13-W	192.168.1.11	192.168.1.1	255.255.255.0	04:5c:06:05:a9:04	V4.0.2.8	1	0	0	0	N	N	80	8000	9000

Next, make sure that all Internet Explorer ActiveX plugin settings are set correctly. The guide to setting up ActiveX can be found here: http://kb.zmodo.com/index.php?solution_id=1022

Next, find the IP address of your QR code device on the IPC Search program, and type that same IP address number into an Internet Explorer browser.

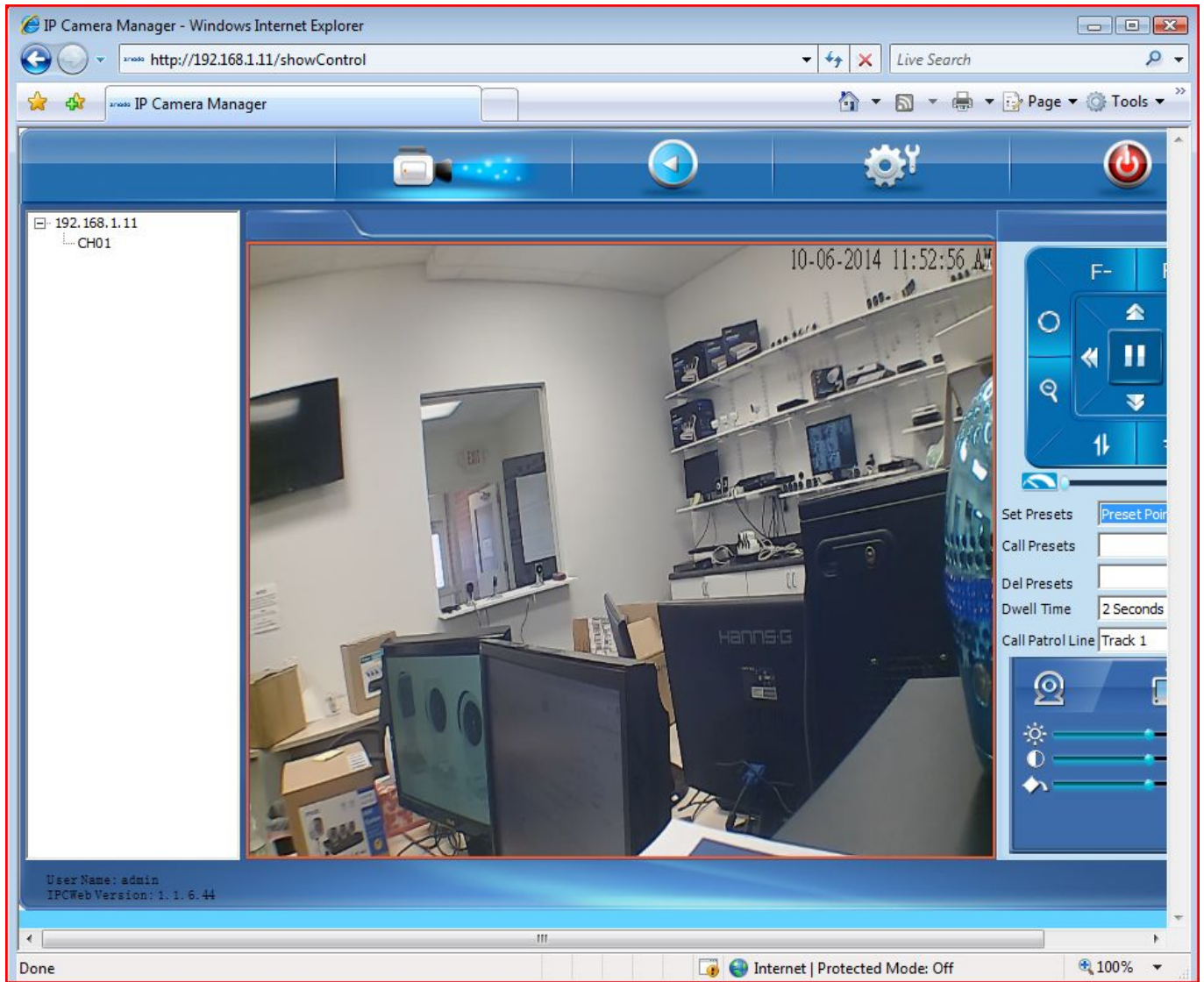
The default login is admin. The default password is 111111.

ZP-KB1104-W

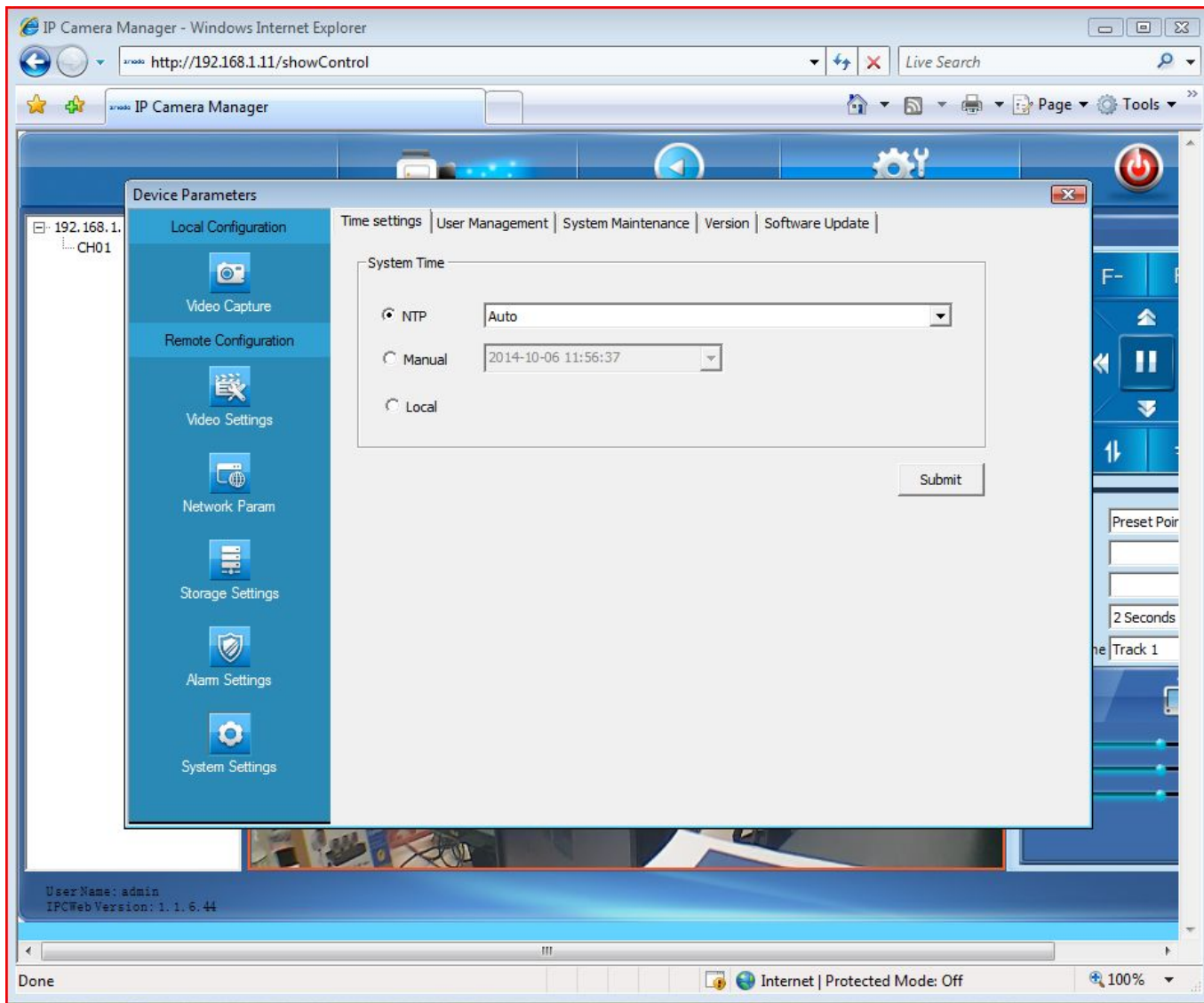


Once you are logged into your device in Internet Explorer, you can view the video stream and change settings for the device.

ZP-KB1104-W



ZP-KB1104-W



ZP-KB1104-W

Unique solution ID: #1332

Author: Amanda Mayer

Last update: 2015-03-30 12:05