

Analog Cameras

How Do I Adjust My Vari-Focal Camera?

Bullet Cameras



First, un-screw the rounded back cover from the back of the camera. This cover hides and protects the camera's vari-focal knobs.



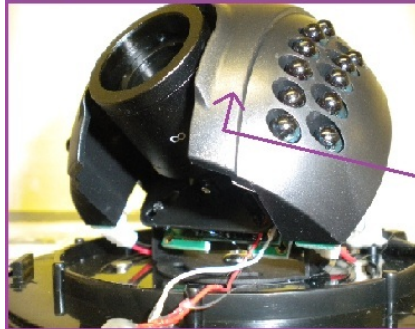
Once the rounded back cover has been removed from the camera, you will see two knobs located on the back of the camera. By rotating these two knobs, you will be able to adjust the zoom and the focus of this camera.

Dome Cameras

Analog Cameras

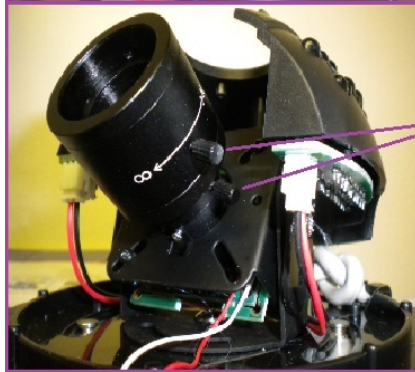


To remove the clear plastic dome cover, simply anchor the bottom plate of the camera and gently twist the white plastic section counter-clockwise.



Removing the clear plastic dome cover will reveal the LED IR light board and the camera's chipset.

The LED IR light board and the camera's chipset rest on two different axis. Pull the LED IR light board back on its axis to fully reveal the camera's chipset.



Once the camera's chipset is revealed, you can adjust the focus and the zoom by turning the two small black knobs that are directly attached to the lens.

Unique solution ID: #1179
Author: Jamie Alksnis
Last update: 2015-03-20 17:19