

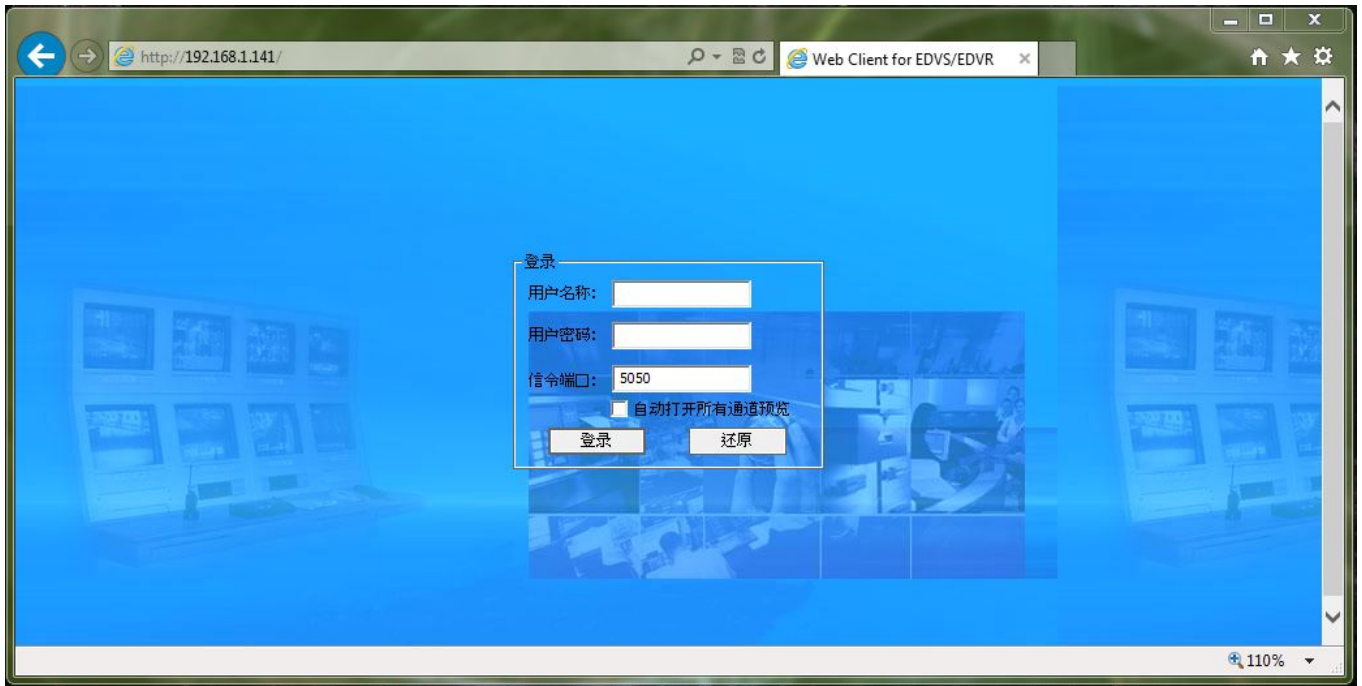
# ZMD-DD-SAN8

## DVR Shows in Chinese on My Computer

### DVR is Showing in Chinese

(9118-4, SBN8-4-6, SAN8-4)

If you go to access a DVR on a computer, and it opens and shows in Chinese instead of English that may mean that the computer is missing the language pack needed.

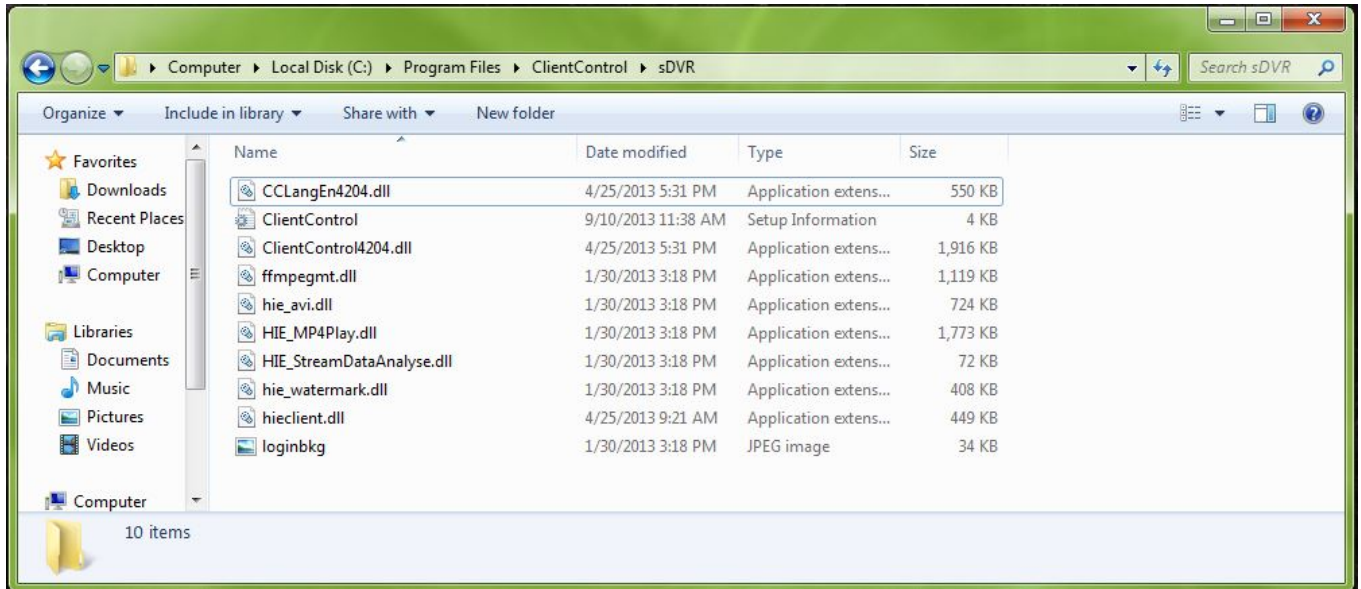


# ZMD-DD-SAN8

To solve this, download the language pack from the following link:

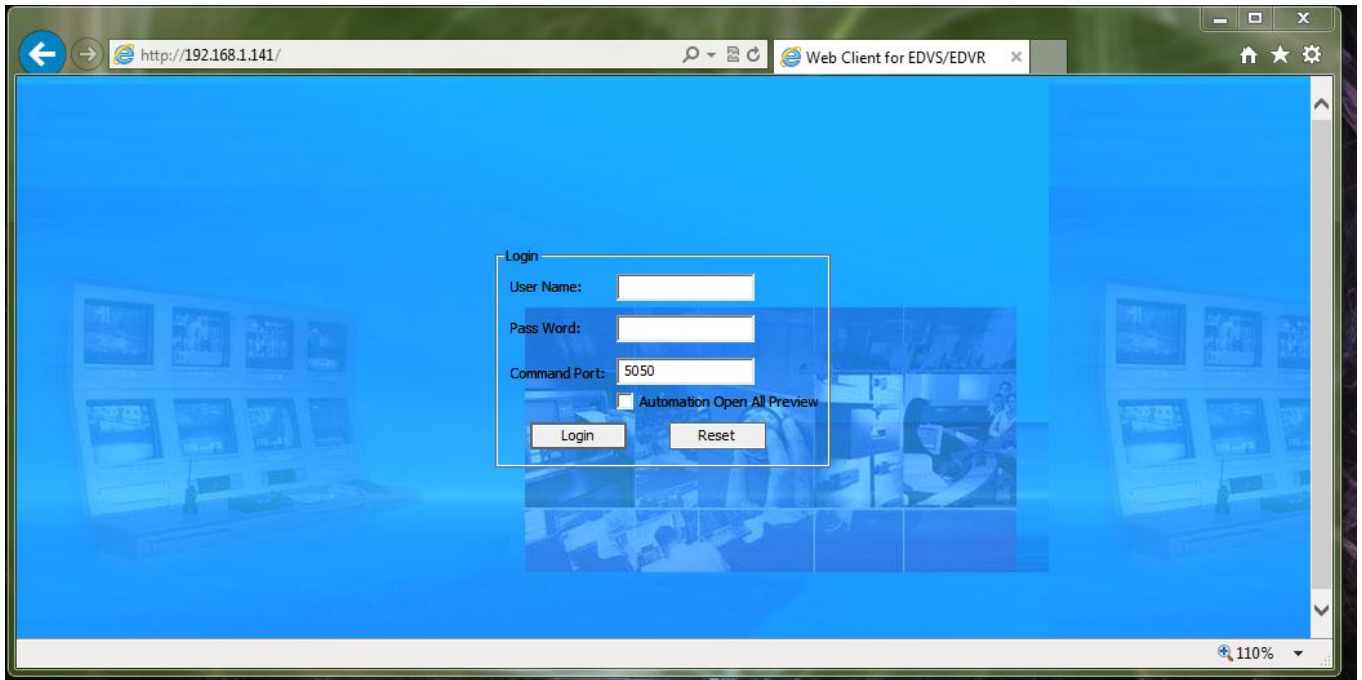
<http://files.zmodo.com/Software%20Files/CCLangEn4204.dll>

Once downloaded, move the **CCLangEn4204.dll** file from your downloads folder into the folder for your DVR's web client. This folder is located at **C:\Program Files\ClientControl\sDVR**



After moving the file, you will want to close Internet Explorer completely, including all windows open on your computer. Once all windows are closed, reopen Internet Explorer and navigate to your DVR. The issue should be resolved, and the DVR should show in English.

# ZMD-DD-SAN8



Unique solution ID: #1228  
Author: Patricia P  
Last update: 2014-04-22 18:16