

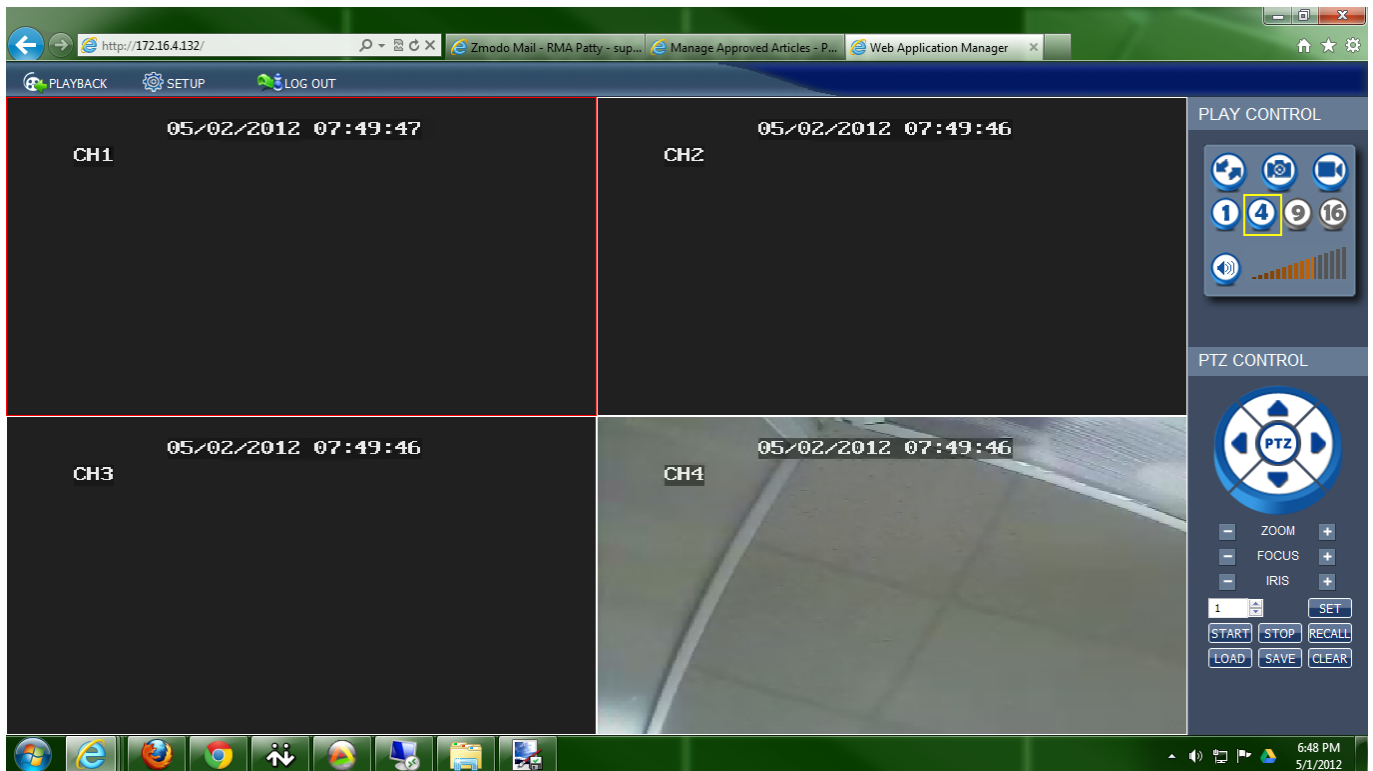
ZMD-DR-SFN6

I can only view 4 cameras on my 9128 or SFN6

The ZMD-DR-SFN6 is unable to view all 16 cameras at once. Instead, you have to cycle through the cameras, 4 at a time.

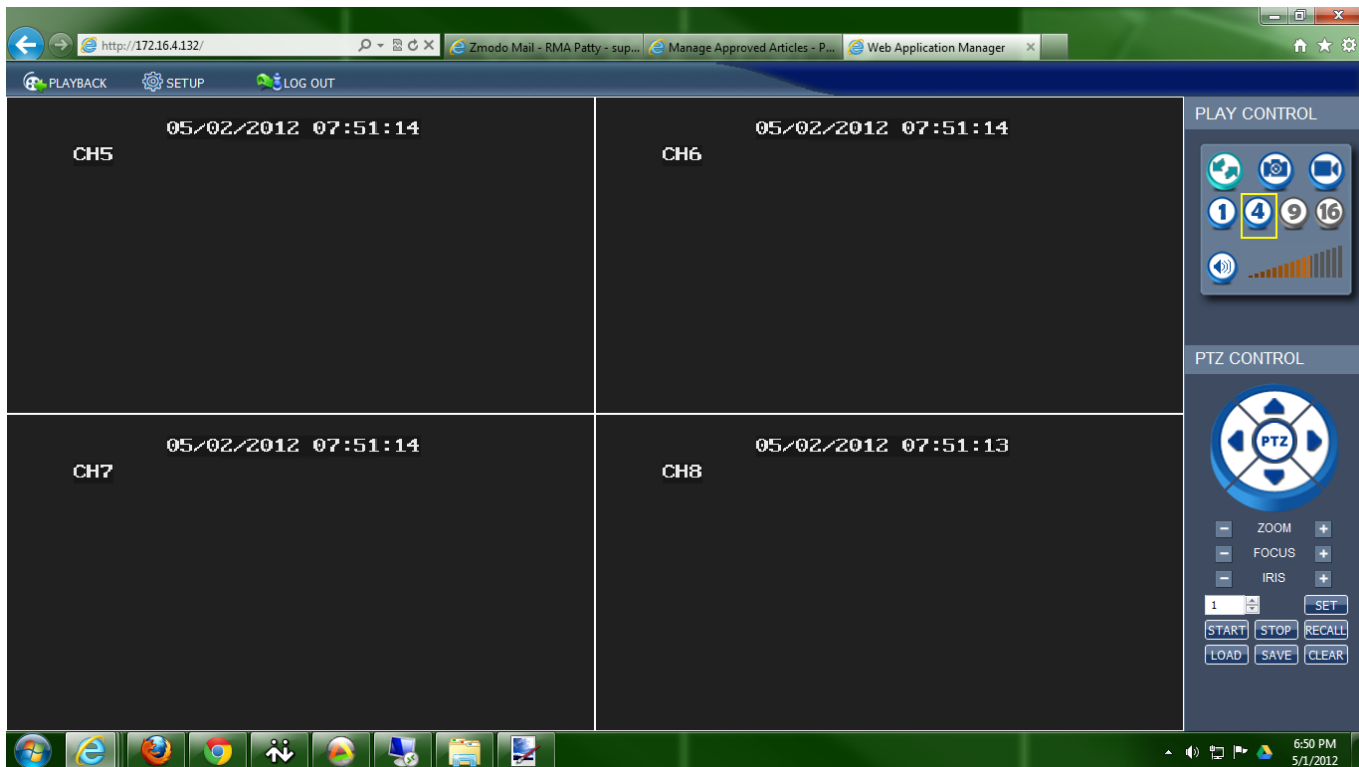
To do this, keep clicking the button that says '4' in the upper-right corner of the interface.

Cameras 1-4



Cameras 5-8

ZMD-DR-SFN6

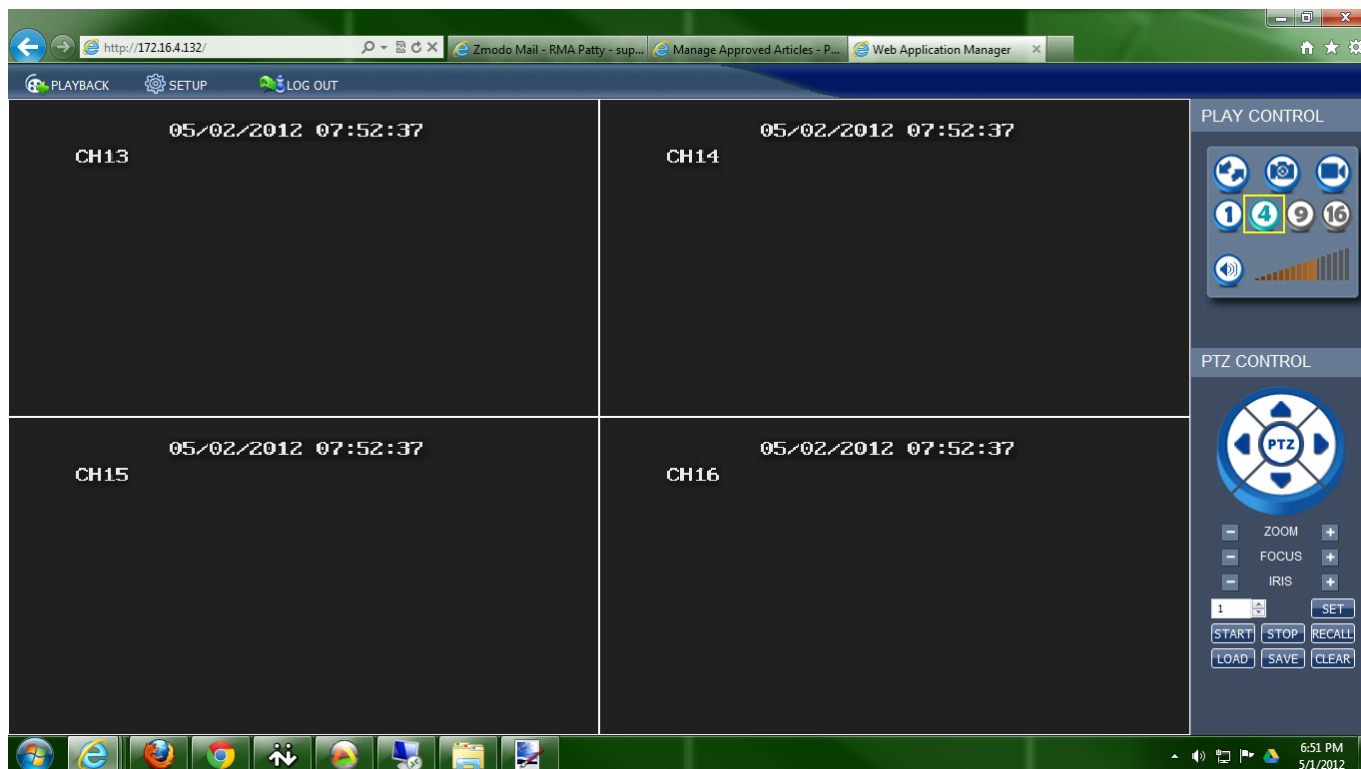


Cameras 9-12



ZMD-DR-SFN6

Cameras 13-16



You can just keep hitting the '4' button and rotate through all 16 cameras that you have hooked up.

Unique solution ID: #1112

Author: Alex Crewell

Last update: 2013-08-16 23:47