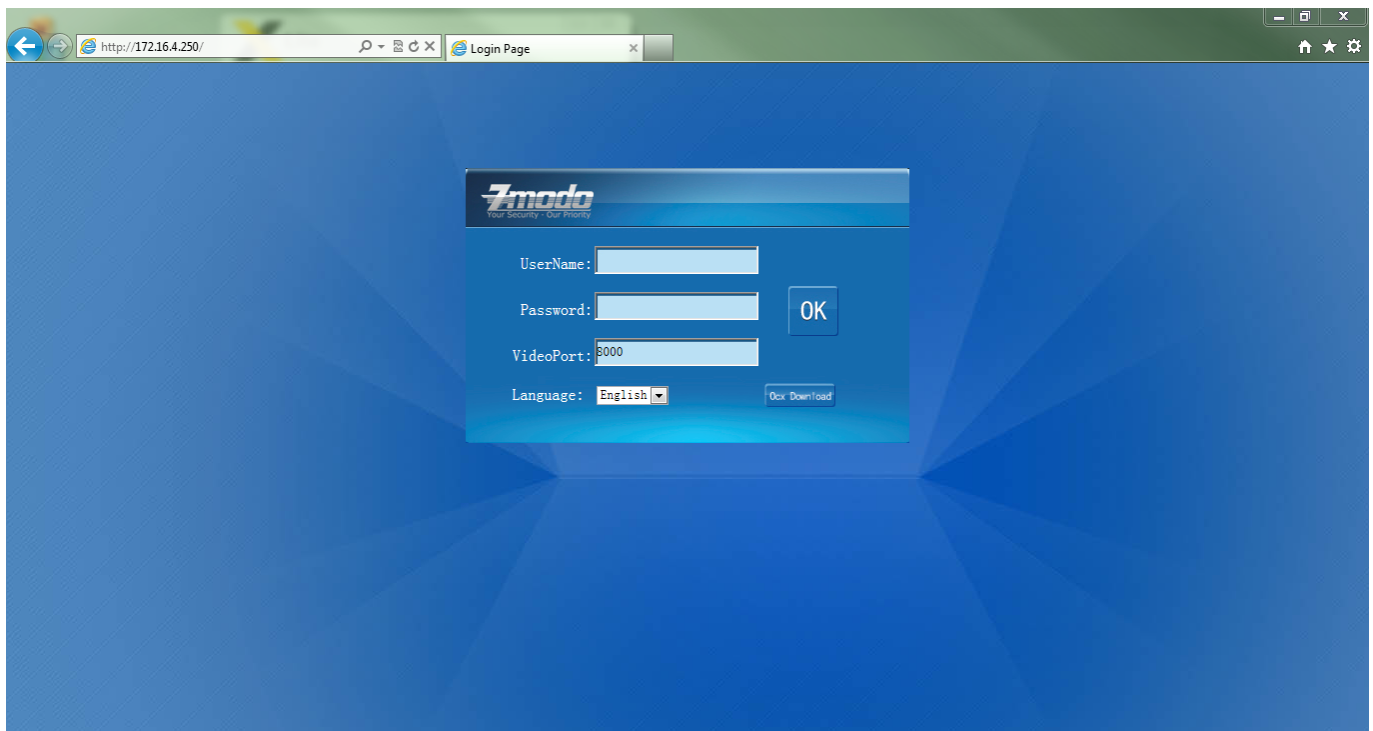


# ZH-IXD15-WC

## Record Over Internet Explorer With ZMD-ISV-BFS23NM, ZH-IXA15-WC, ZH-IXB15-WC, ZH-IXC15-WC, ZH-IXD15-WC

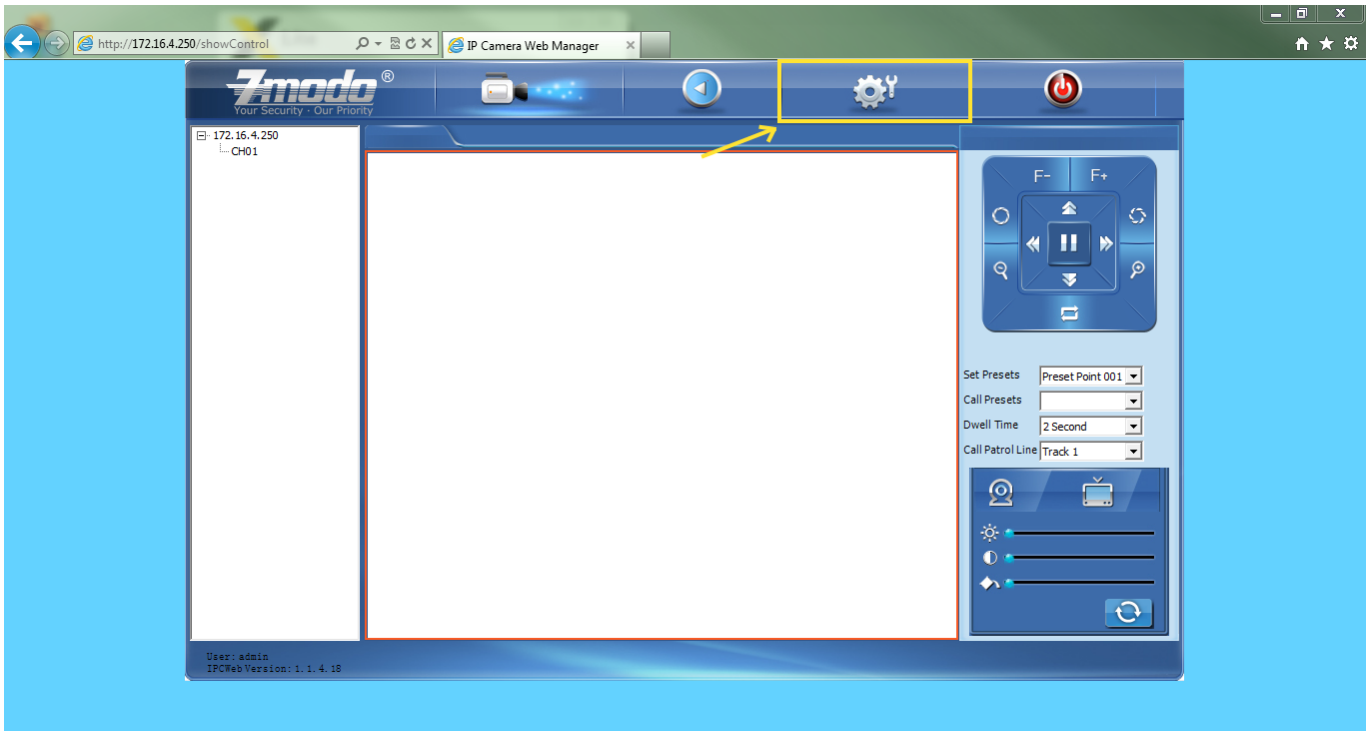
### How to Record Over Internet Explorer With ZMD-ISV-BFS23NM

1. Log into the IP address of the camera with Internet Explorer. Make sure to open Internet Explorer by Right-Clicking on the Internet Explorer logo and choosing "Run As Administrator".



2. Access the settings menu on the camera.

# ZH-IXD15-WC



3. Change the file path of the recording directory. Recommended to use C:\Users\USER\Videos

# ZH-IXD15-WC

Device Parameters

Local Configuration

Video Capture

Local Video Store Settings

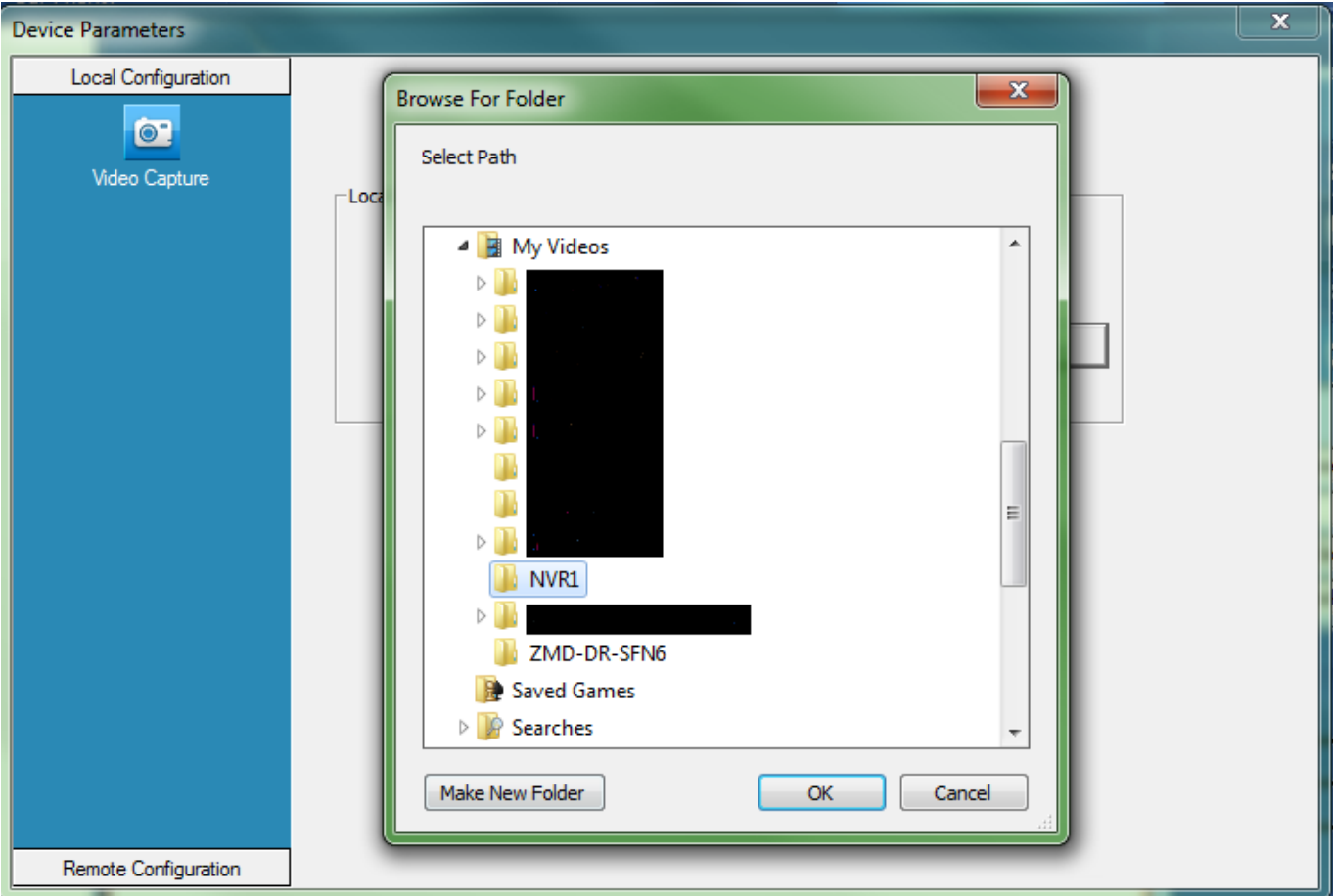
Video files packaged time  mins

Storage directory  ...

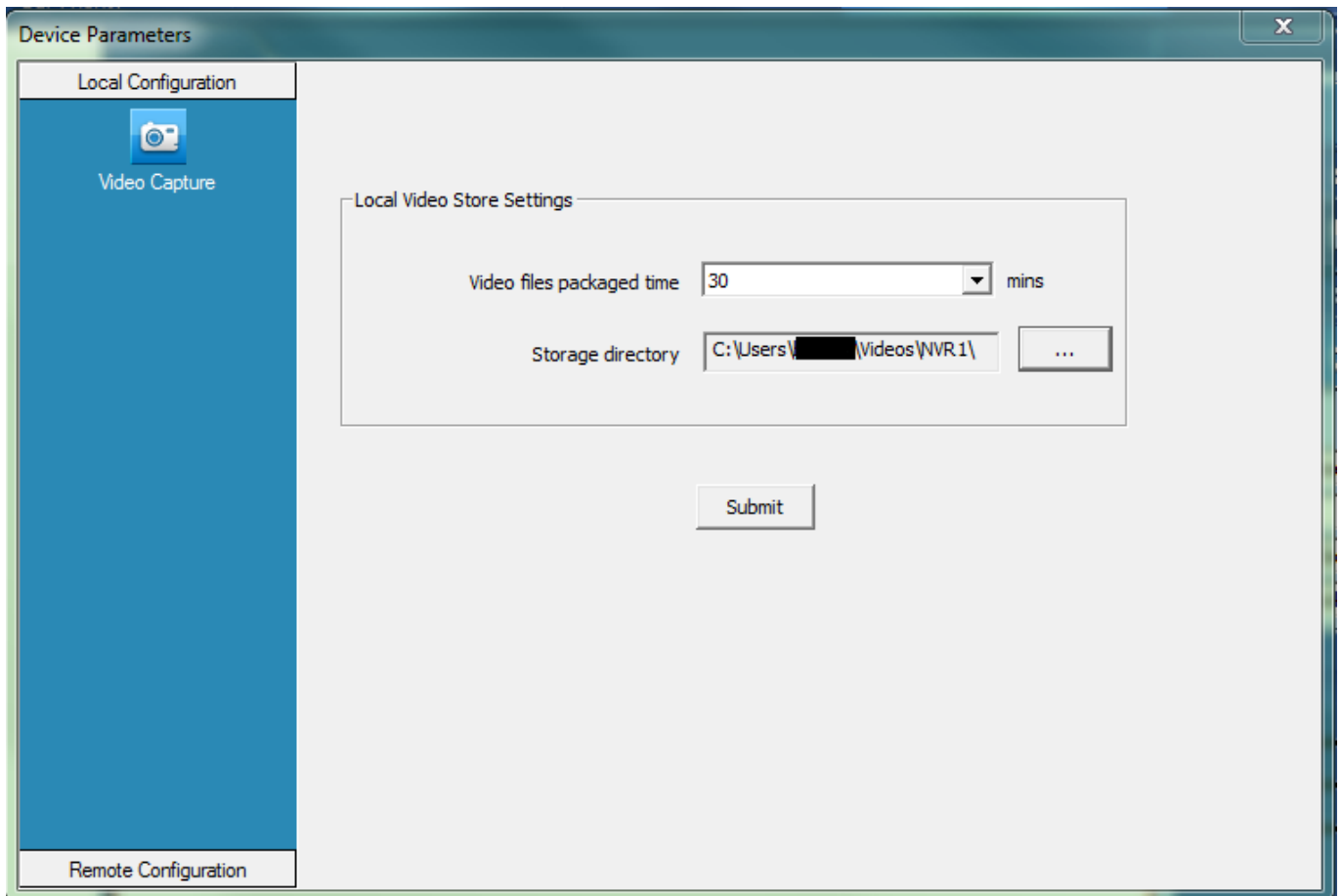
Submit

Remote Configuration

# ZH-IXD15-WC



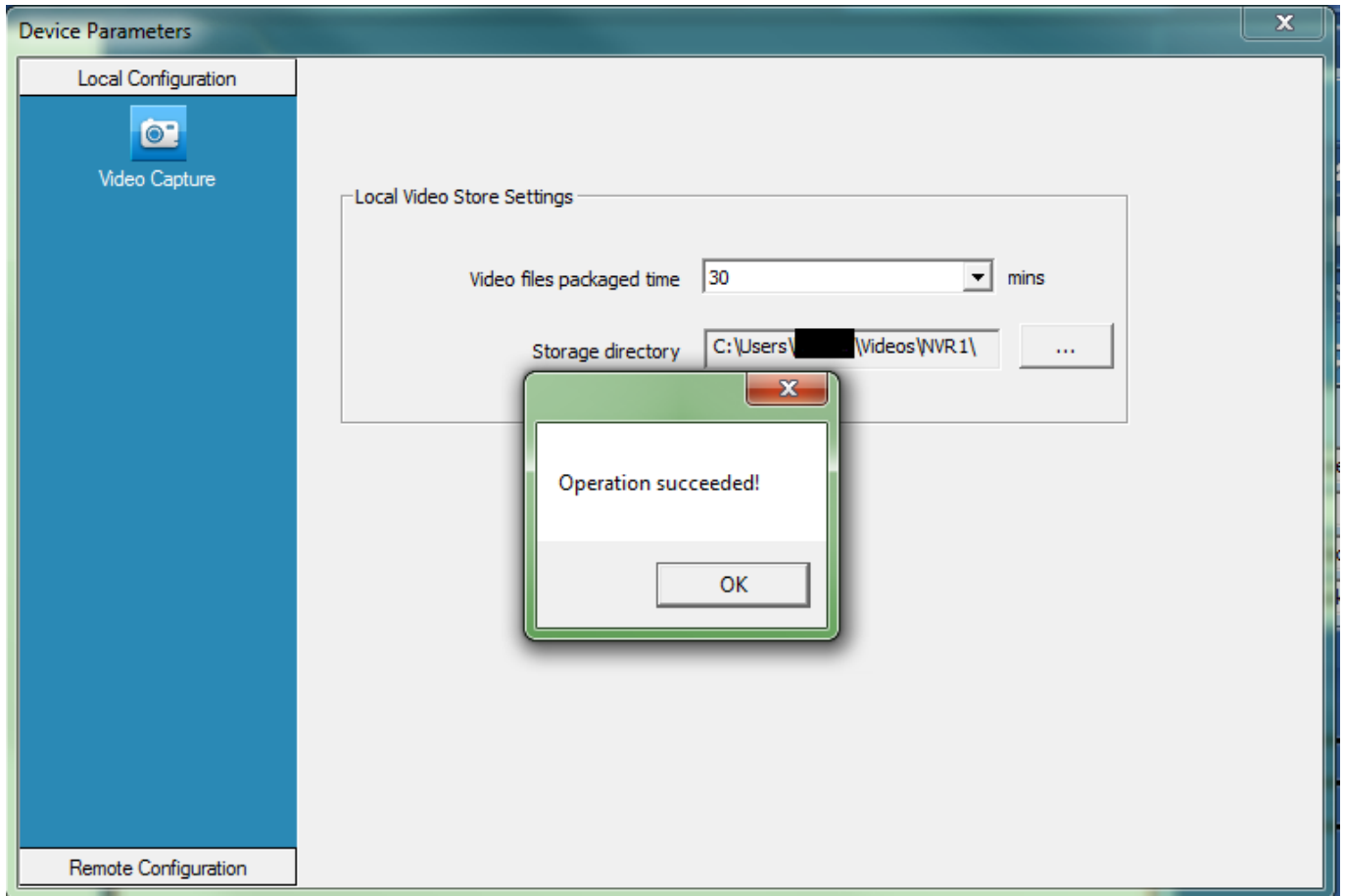
# ZH-IXD15-WC



The screenshot shows a web-based configuration interface titled "Device Parameters". On the left, there is a vertical navigation bar with two tabs: "Local Configuration" (selected) and "Remote Configuration". Under "Local Configuration", there is a camera icon and the text "Video Capture". The main content area is titled "Local Video Store Settings" and contains two fields: "Video files packaged time" set to "30" with a dropdown arrow and "mins" label, and "Storage directory" set to "C:\Users\██████\Videos\NVR1\" with a browse button "...". A "Submit" button is located at the bottom center of the main area.

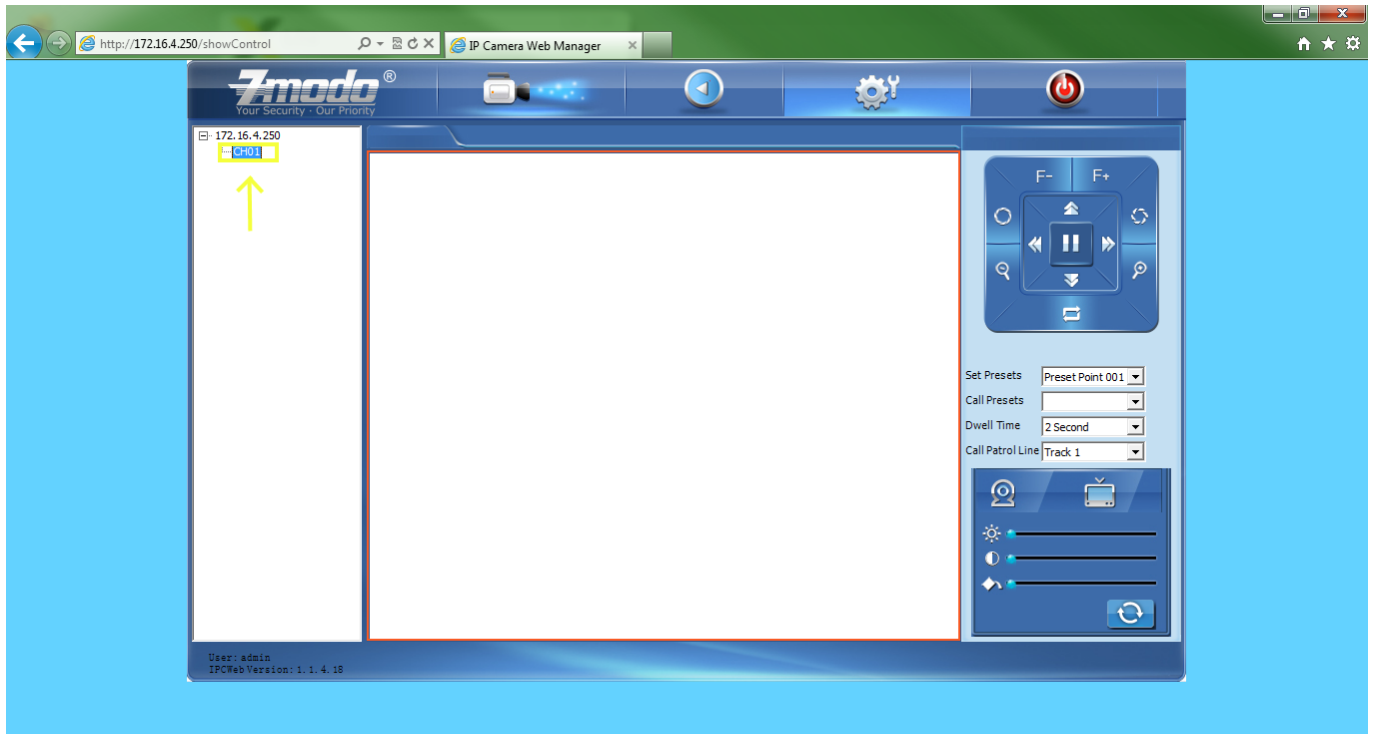
4. After selecting the folder you want to save to, please hit the "Submit" button to save the settings. You will see a message pop up saying "Operation Succeeded!"

# ZH-IXD15-WC



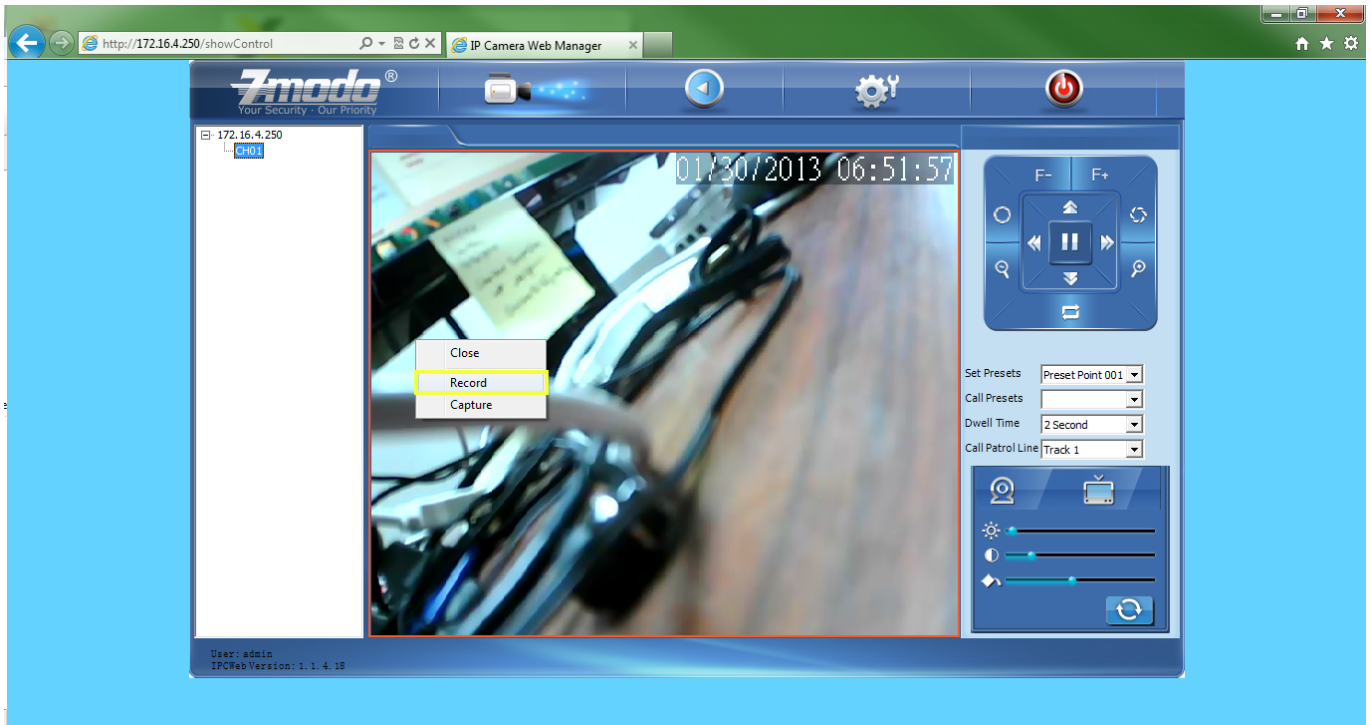
5. Exit out of the settings menu and then double click on the name of the camera on the far left. It is labeled as CH01 by default. The video should load up on your screen.

# ZH-IXD15-WC



6. After you have the video on your screen, RIGHT-CLICK on the any part of the playing video and Select "Record" from the window that pops up.

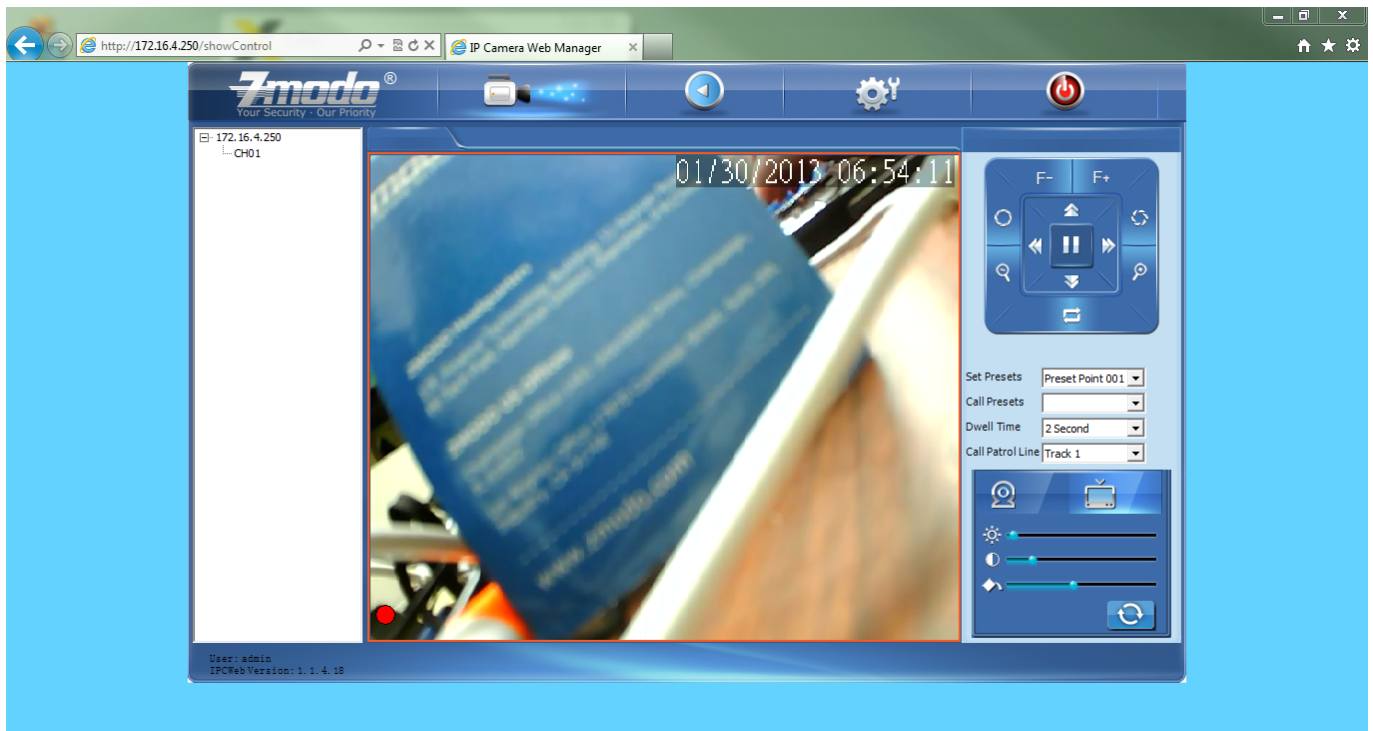
# ZH-IXD15-WC



7. If everything has been done correctly, you should see a little red dot on the bottom left of your screen. This shows you that it is recording to the folder we just set.



# ZH-IXD15-WC



Your camera is now recording whenever you see that red dot in Internet Explorer. If you close Internet Explorer, it will stop recording and you will need to follow steps 5-7 to make it start recording again.

Unique solution ID: #1061

Author: Alex Crewell

Last update: 2013-08-16 00:21