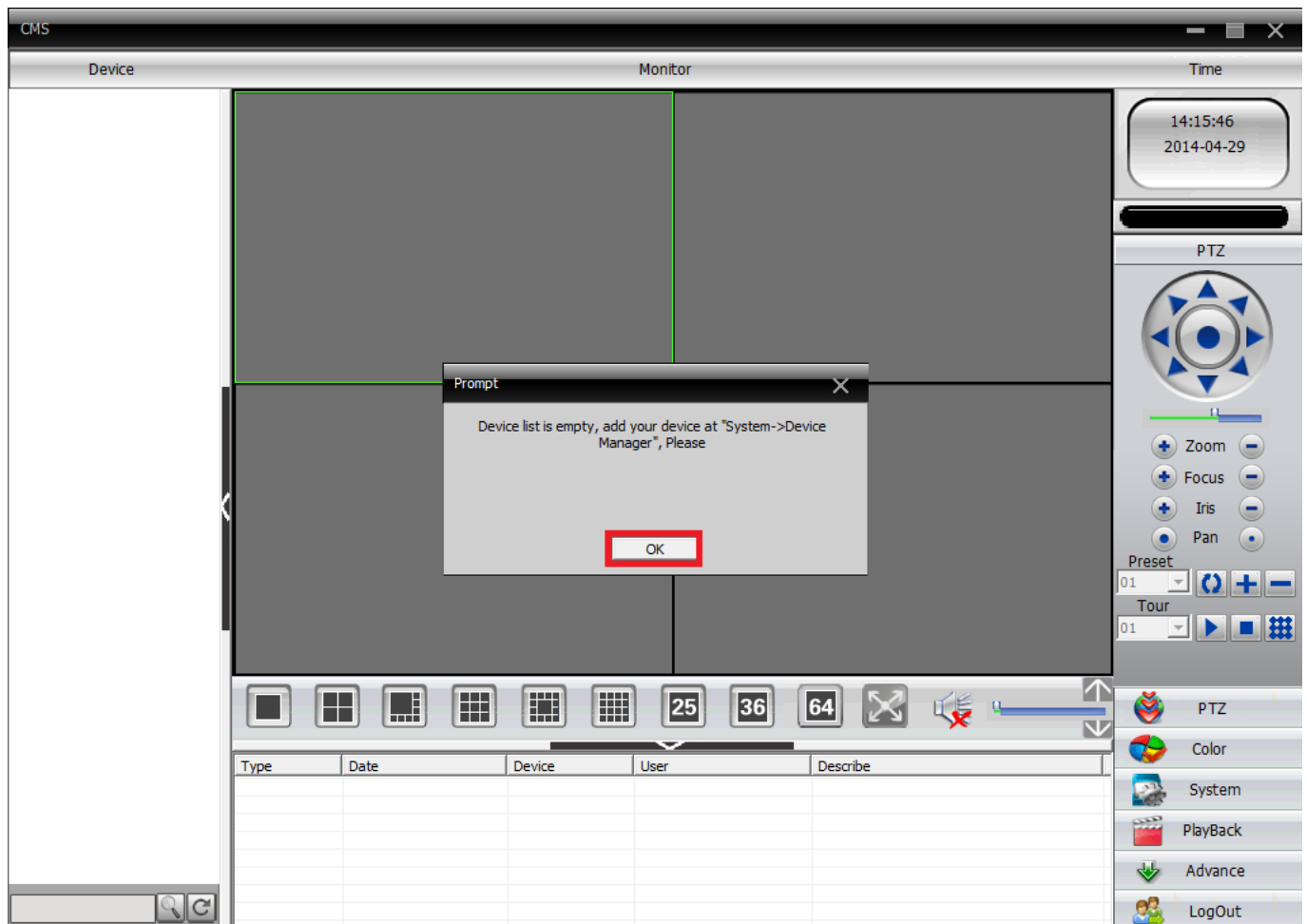


ZMD-DT-SCN4

How to connect the SCN4, SCN8, and SEN6 to the General CMS software

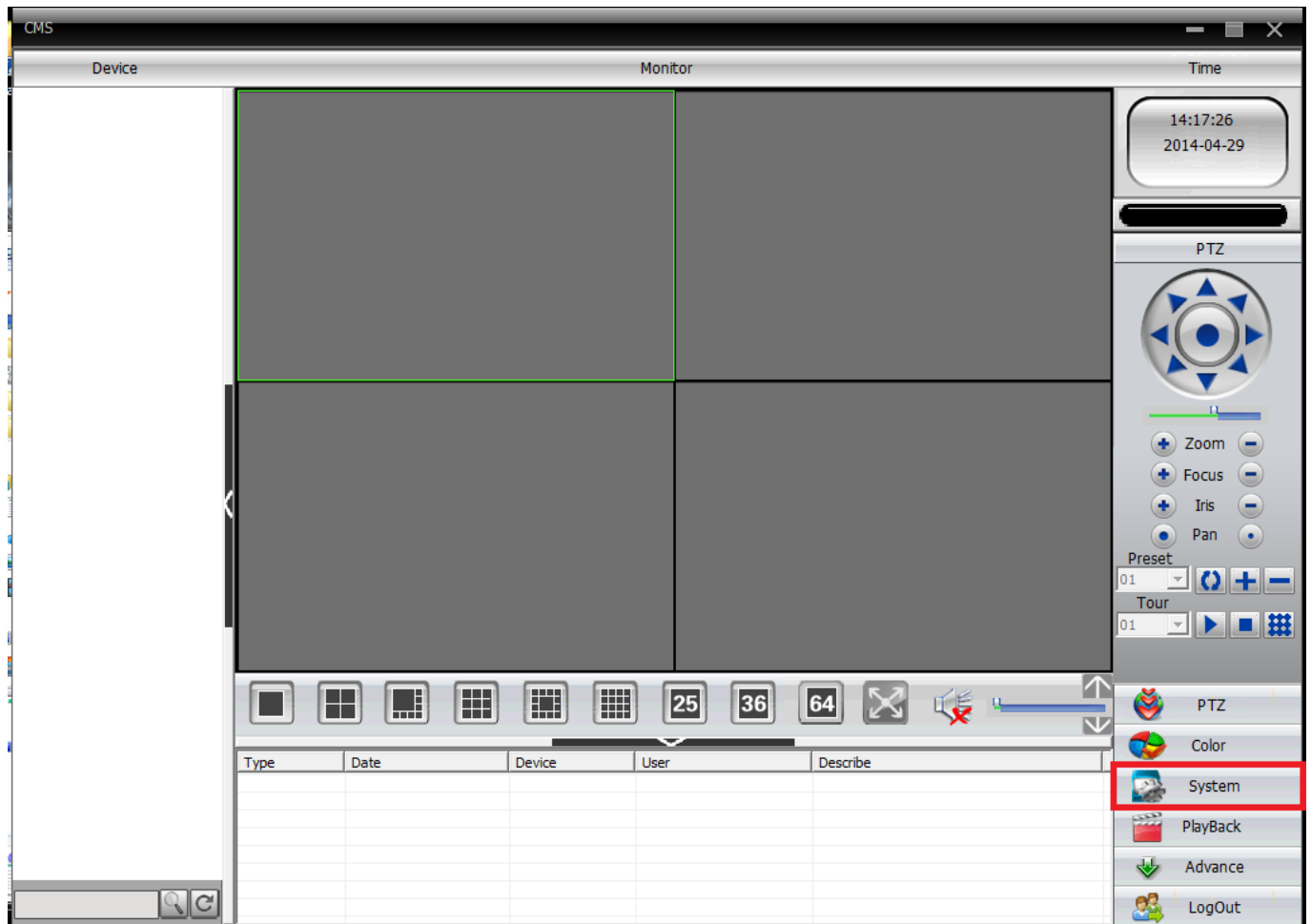
This is a tutorial on how to connect DVRs with the SKU numbers SCN4, SCN8 and SEN6 to the General CMS software that came with the DVR units. If you have misplaced the disc, click [here](#) to download the software.

1. When you first open the software, there will be a warning that there is no device connected.



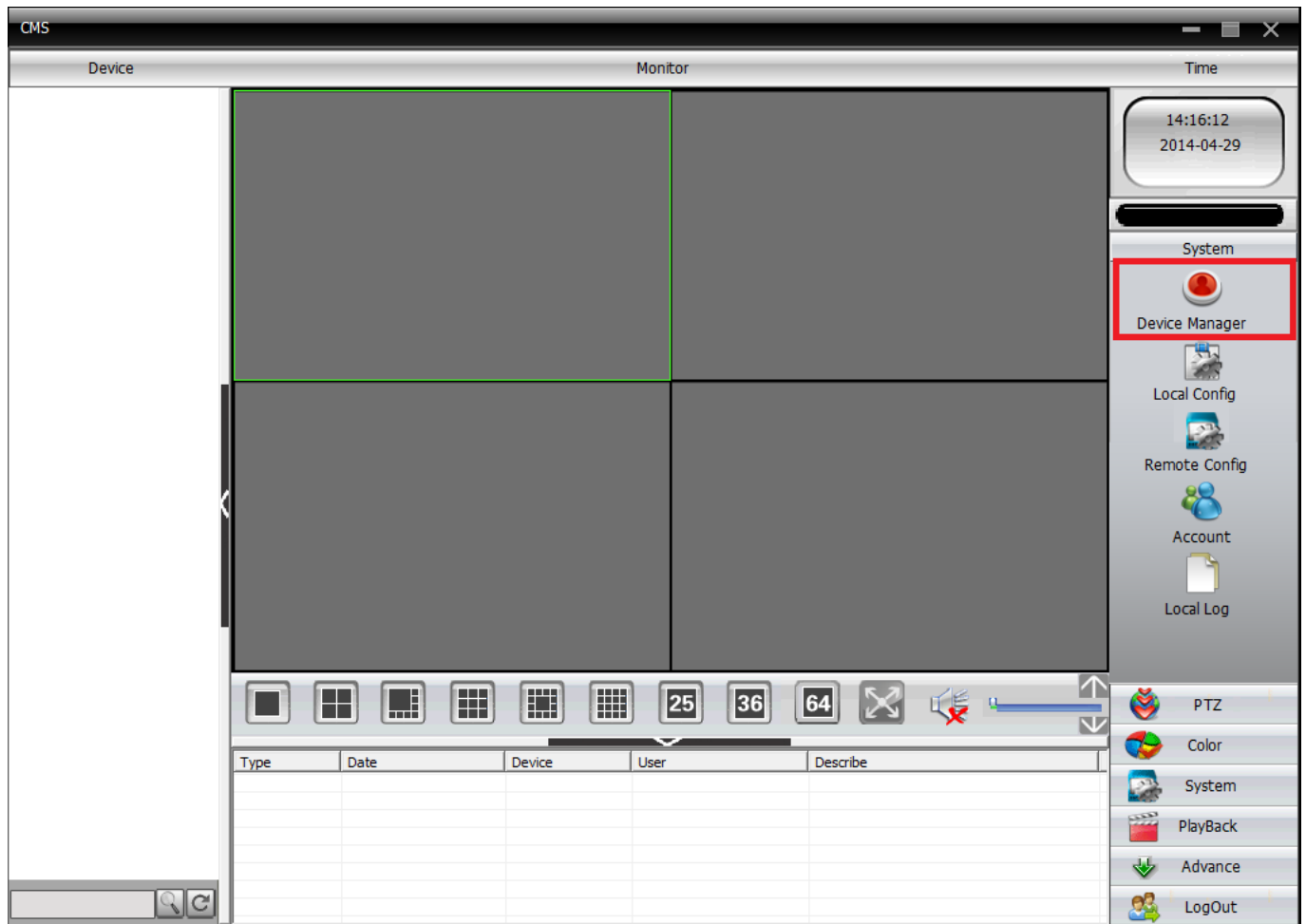
Click **OK** and then select the option for **System** as shown below.

ZMD-DT-SCN4



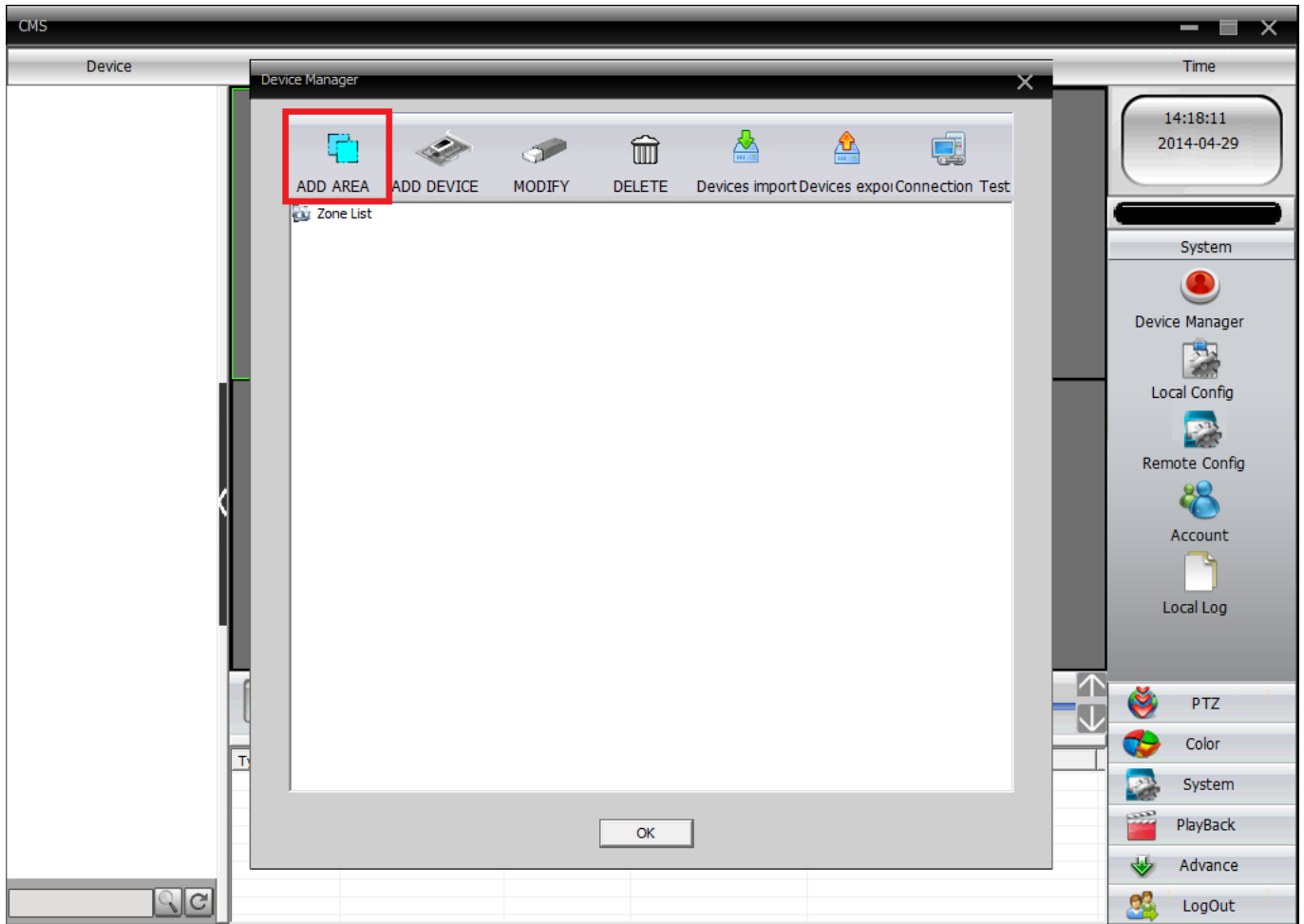
2. Select the option for **Device Manager**.

ZMD-DT-SCN4



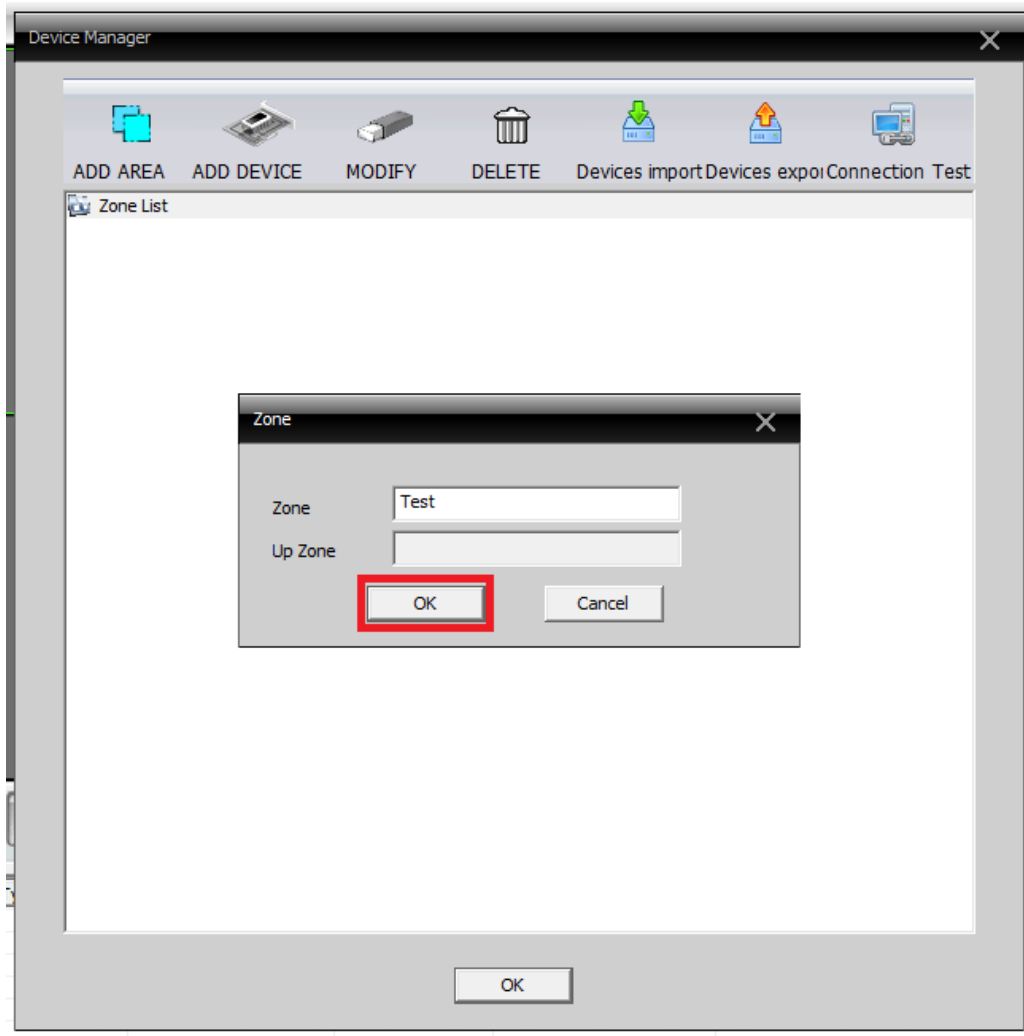
3. This should open up a new window. Select **Add Area**.

ZMD-DT-SCN4



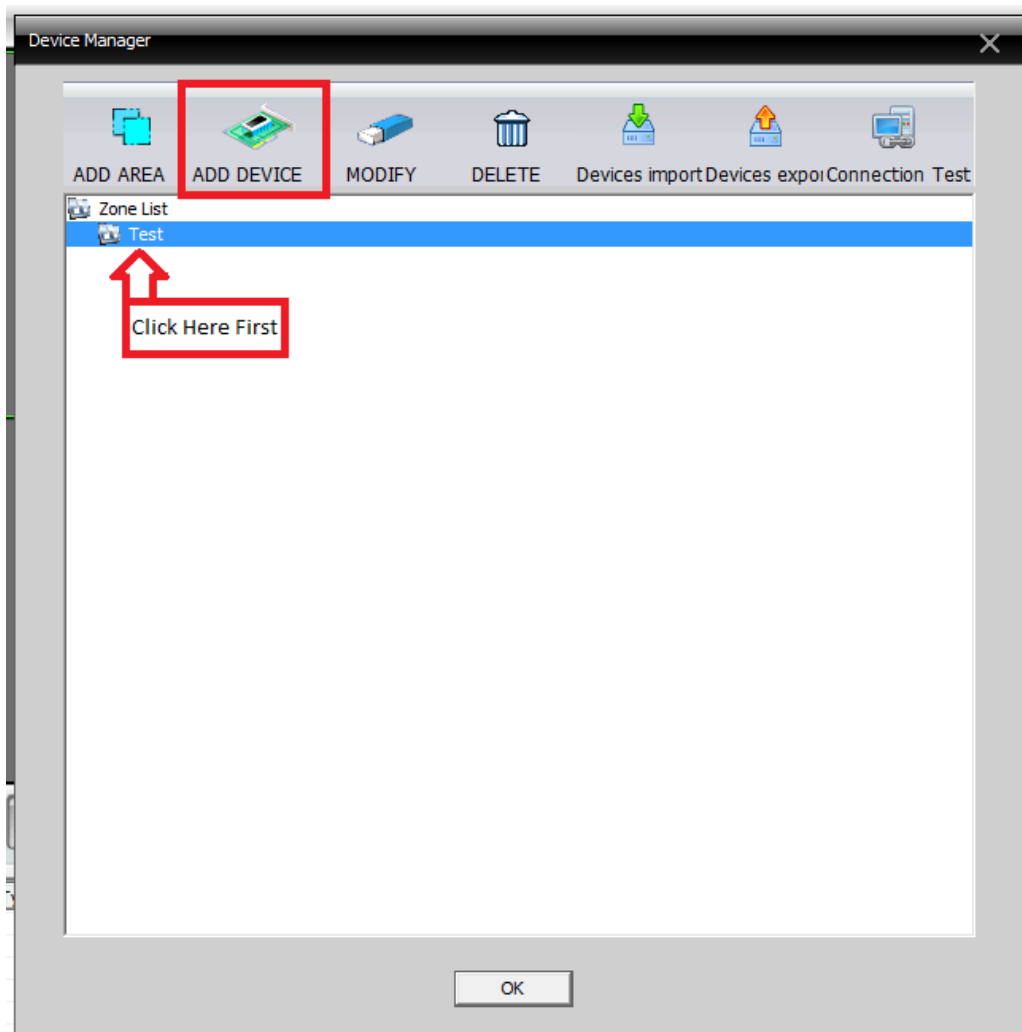
4. For the **Zone** enter a description of the location of the DVR, for example Home or Work. Then click **OK**. This is to help organize your DVRs if you have multiple DVRs in different locations.

ZMD-DT-SCN4



5. The zone you created will appear in the Zone List. Select the zone that you created, and then the option to **Add Device** will appear.

ZMD-DT-SCN4



6. Before adding the new device, the DVR should already be setup for local or remote access. You will also need all the IP addresses, port numbers, and login information already setup on your DVR.

- Name: this can be whatever you like it to be
- IP Address:
 - If you are on the same local network, you will use your local IP address that should be listed in the Network section on the DVR (Usually 192.168.x.x or 10.0.x.x)
 - If you are away from the location, you will use your External or Public IP address.
- Port: By default it should be **34567**, unless it has been changed on DVR's network settings
- Username/Password: This will be the username and password you use to access the DVR.
 - It may be the administrator username and password for full privileges.
 - It can also be a custom username and password that was created for specific users with limited access.

ZMD-DT-SCN4

Device Manager

Edit

NO.	IP Address	Port	MAC	Vendor
-----	------------	------	-----	--------

IP Search Add Device EditDevice

Device Name

LoginType ☒ IP Address ☐ Domain ☐ ARSP ☐ Cloud

IP Address . . .

Port

User Name Password

Zone

Vendor

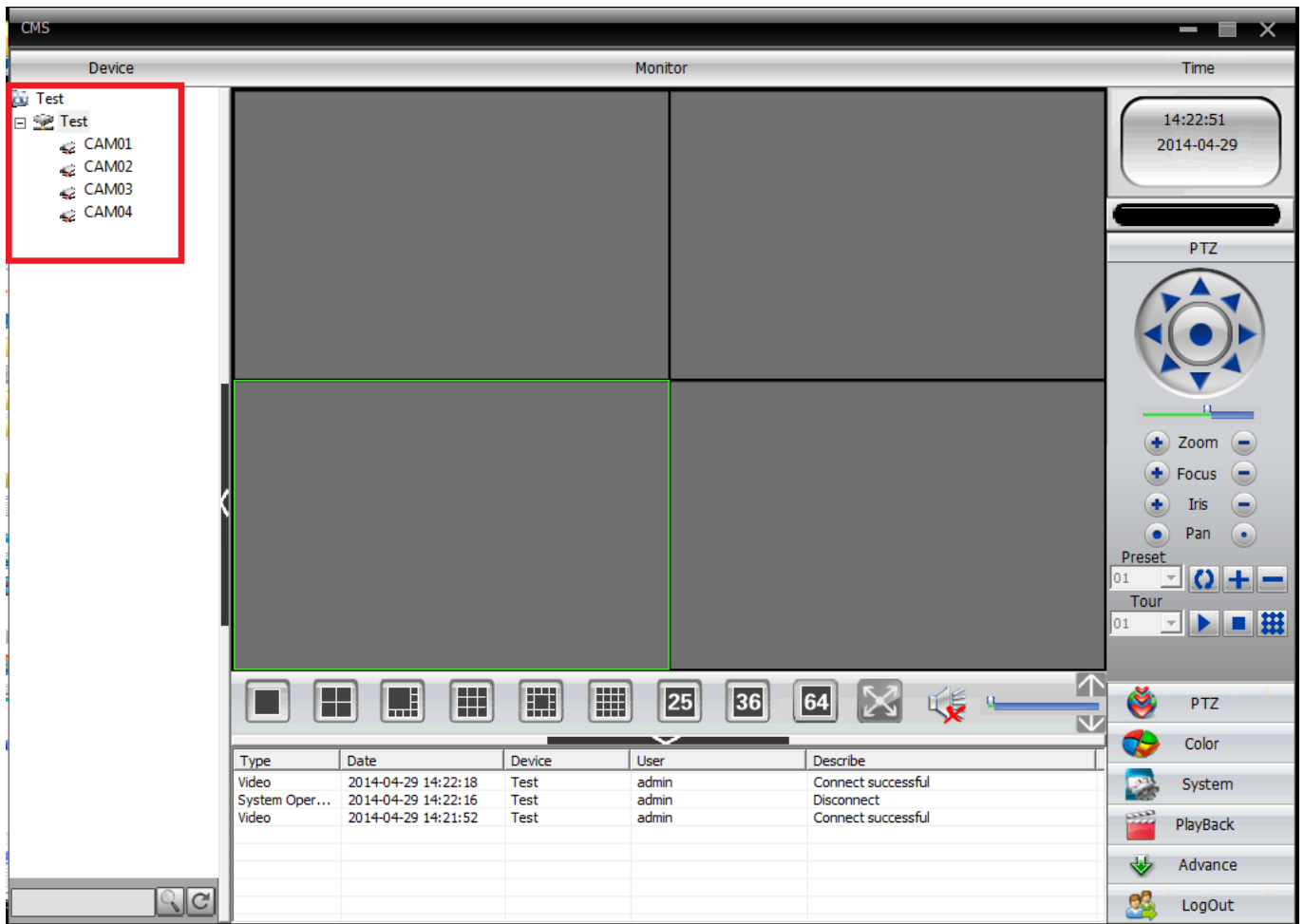
OK Cancel

OK

Once you have all that information filled out. Click **OK** and you should see your Device Name that you created listed underneath the Zone. Click **OK** again to go back to main screen.

7. You can now **double-click** on the Device Name listed under the Device List. You should see on the bottom that it says **Connect Successful**, and your camera channels will appear under the DVR Device Name.

ZMD-DT-SCN4



8. To connect to the cameras, right-click on the Device Name and select the option for **Connect all Video**.

- Choose the **Main Stream** if you are local or want higher quality video, but this may take longer to load.
- The **Extra Stream** will give you a smoother image with a lower quality image.

You can also open each channel individually by first selecting a window with the green outline. Then double-click on one of the channels, for example CAM01, and the channel will appear in that window. Repeat the process for the other channels.

Unique solution ID: #1314

Author: Ed Lamont

Last update: 2015-03-20 17:02